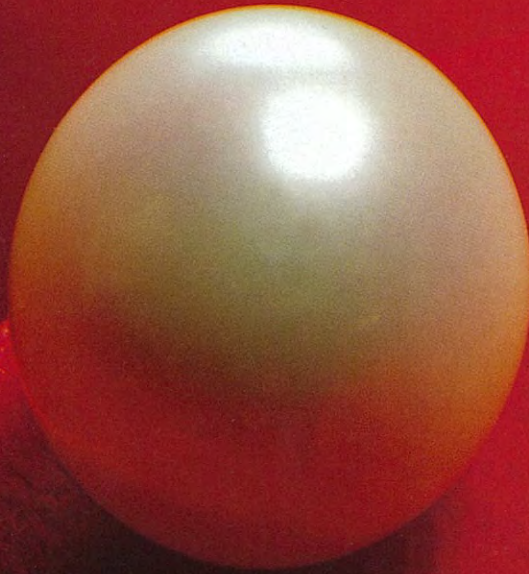


D I S C O V E R

MIE

JAPAN



Welcome to Mie Prefecture!

Located in the center of Japan, Mie has prospered as a corridor between eastern and western Japan since ancient times. Blessed with a mild climate and spectacular setting between mountains and the sea, Mie features many sites that reflect the rich historical legacy of the region.

Are you ready for a tour through Mie?

Here is an introduction to some of the highlights of Mie Prefecture.

Location of Mie

Mie is located roughly in center of Japan, in the Tokai region. Access is easy from Tokyo, Osaka, or Nagoya, and we are located close to Kyoto and Nara.

Many tourists visit Mie every year.

If you are planning to visit to Kyoto or Nara, why not Mie also?

Please include Mie in your tour plans and visit us.



Climate of Mie

Mie is on Japan's Pacific coast and enjoys four distinct seasons. Beaches are popular during the summer days. The rainy season lasts through June and early July. In winter, snow sometimes falls in low-lying areas. Spring and autumn are the best times of the year for travel and tend to be the busiest times for sightseeing.

Monthly average temperatures (averages from 2001 to 2005)

Month	1	2	3	4	5	6	7	8	9	10	11	12
Temperature (°C)	5.2	6.2	8.8	14.8	19.0	23.2	26.9	27.5	24.6	18.4	13.1	7.7

Monthly average rainfall (averages from 2001 to 2005)

Month	1	2	3	4	5	6	7	8	9	10	11	12
Amount of rainfall (mm)	64.3	45.8	87.4	75.2	191.0	158.0	124.4	156.2	283.7	212.3	79.7	43.4

(Location/Tsu)



Please check this out before starting your trip!

Mie Tourism Guide, a website for tourism information within Mie Prefecture

You can access the latest tourism information on a website before you depart for Mie. With the Mie Tourism Guide, you can easily receive necessary tourism information, event schedules, and model sightseeing courses.

<http://welcome.kankomie.or.jp/>



We suggest that you open the complete Access Guide and Map of Mie Prefecture located in the back of this brochure as you browse through the tourism information. The numbers referencing information in the brochure are on the map to assist you in finding the location.



Northern Area



Stations Along the Historic Tokaido Road

The Northern Area is bounded by the Yoro Mountains to the north and the towering Suzuka Range to the west. During the Edo Period this area was the location of part of the Tokaido Road, the most important trade route from eastern to western Japan, and was crowded with travelers. This is a place where history abounds, the landscape changes from season to season, and you can follow in the footsteps of travelers of long ago.



1 Tado-Taisha Shrine (Kuwana City)

This shrine was written about in an ancient poem, "If you travel to Ise (Ise Jingu), you must visit Tado, too." The full lineage of Japanese emperors have revered this shrine as a home for the god of industry and business. You can enjoy viewing important national cultural treasures maintained here. The Tado Festival, well known as the Horseback Climbing Ceremony, is held on May 4th and 5th every year.

■ 5-minute bus ride to the Tado-Taisha Mae bus stop from Tado Station on the Kintetsu Line

2 Sekijuku (Kameyama City)

During the Edo Period this district of inns on the historical Tokaido Road was a popular rest place, both for feudal processions and for pilgrims journeying to Ise. Now restored, the old part of town includes two hundred historical buildings. As the only remaining historical inn district on the Tokaido, it has been designated a national historical district.

■ 10-minute walk from Seki Station on the JR Line



3 Ruins of Kameyama Castle (Kameyama City)

The ruins, a designated prefectural historic site, include the fifteen-meter-high stone walls constructed during the 16th century Azuchi Momoyama Period and fortifications from the Edo Period.

■ 10-minute walk from Kameyama Station on the JR Line



4 Suzuka Circuit (Suzuka City)

Located here is a comprehensive leisure complex with an international racing course, an amusement park, and a hotel. Demonstrations of the famous two-legged robot ASIMO are held here. You can enjoy hot spring bathing in the hotel.

■ 15-minute bus ride to the Suzuka Circuit bus stop from Shiroko Station on the Kintetsu Line



5 Nagashima Spa Land / Yuami-no-shima / Jazz Dream Nagashima (Kuwana City)

Nagashima Spa Land is an amusement park full of thrill rides. Its Jumbo Seawater swimming pool is very popular during the summer.

Yuami-no-shima is a spa facility where you can enjoy various kinds of spas, including an open-air spa. A huge outlet shopping mall, Jazz Dream Nagashima, is located next to Nagashima Spa Land.

■ 15-minute ride to the Nagashima Onsen bus stop from Kuwana Station on the JR or Kintetsu lines



10 Suzuka City Traditional Industries Museum (Suzuka City)

This museum was built to carry on traditional craftsmanship, of which Suzuka City is quite proud, including Suzuka ink which developed into the second-largest ink-producing industrial region following Nara, and Ise pattern paper that is mainly used for dyeing Japanese kimonos, yuzen and komon. Here you can experience the craftsmanship of Ise pattern paper.

■ 10-minute walk from Tsumugigaura Station on the Kintetsu Line

7 Banko Pottery Center (Yokkaichi City)

Banko pottery, said to grow in luster and beauty the longer it is used, is a traditional product with a proud history of over 250 years. The pottery center has displays of Banko ware and items for sale.

■ 5-minute walk from Kawaramachi Station on the Kintetsu Line



8 Streetscape of Old Kuwana (Kuwana City)

In the Edo Period, Kuwana prospered as one of forty-two lodging stations along the historical Tokaido Road that extended from Kyoto to Tokyo. At the time, travelers crossed from Atsuta in Nagoya to Kuwana by boat at a point known as Shichiri-no-Watashi. Kyuka Park, where the ruin of Kuwana Castle are situated, is now a popular spot to view cherry blossoms and azaleas, but the surrounding district bears only faint traces of its former history.

■ 15-minute walk from Kuwana Station on the JR or Kintetsu lines



9 Rokkaen (Kuwana City)

Rokkaen was designed by the architect who also designed the Rokumeikan. It is a Western-style mansion with a 4-storey tower, Japanese-style structures, and a circuit path garden having a central pond. It has been designated as an important national cultural treasure. The mansion is fantastically illuminated until 10:00 p.m.

■ 20-minute walk from Kuwana Station on the JR or Kintetsu lines



6 Mt. Gozaisho / Yunoyama Spa (Komono Town)

Mt. Gozaisho is the highest peak in the Suzuka Range. An aerial ropeway allows visitors to climb to the peak from Yunoyama hot springs, at the foot of the mountain. Mt. Gozaisho is also noted for its splendid autumn colors. The top area of Mt. Gozaisho is a natural park and Ise Bay may be viewed from the observation tower. Yunoyama hot springs are at the mountain's foot, to ease and relax your body and soul.

■ 10-minute walk from the Yunoyama Onsen bus stop, after a bus ride from Yunoyama-onsen Station on the Kintetsu Line



Central Area



A Door to the Past

In the Edo Period Matsusaka prospered both as a castle town and as a major trading center, due to the many merchants and Ise-bound pilgrims who made their way through this town. Even today, many historical points of interest scattered through the area attest to the past prosperity of the district. Nearby Osugi Valley and Okukahada Gorge offer beautiful scenery.



1 Okukahada Gorge (Matsusaka City)

This ravine along the upper reaches of the Kushida River features a breathtaking view of huge boulders, primeval forest, and waterfalls both large and small.

■ 90-minute bus ride to the Hotel Smeall bus stop from Matsusaka Station on the JR or Kintetsu lines

3 Sakakibara Spa (Tsu City)

One of the three most famous hot springs in Japan, Sakakibara Spa has been popular since ancient times. It is mentioned in the Makuranososhi (Pillow Book) of Sei Shonagon, a female writer and member of the Imperial court during the 10th century, where it is referred to as "Nanakuri-no-yu"

■ 30-minute bus ride from Hisai Station on the Kintetsu Line or
■ 15-minute bus ride from Sakakibara-onsenguchi Station on the Kintetsu Line



5 Kitabatake House Garden (Tsu City)

This garden, located in the Kitabatake Shrine, is one of three gardens in Japan famous for having been designed by military leaders. Designed by General Hosokawa Takakuni during the 16th century, the garden is constructed in the "dry garden" style (made famous by Kyoto's Ryonji Temple) and includes a pond.

■ 10-minute ride from Ise-okitetsu Station on the JR Line

2 Gojoban Yashiki (Castle Guards House) (Matsusaka City)

Matsusaka Castle, constructed in 1588, is now a park in which the stone walls remain. Adjacent to the castle are nineteen houses in which the families of the castle guards resided. Encircled by fences and stone pavement, the residences radiate an elegant, historic air. Some of the original families still live in these houses today, but one house is open to the public.

■ 5-minute walk from the Shiyakusho-mae bus stop after a ride from Matsusaka Station on the JR or Kintetsu lines



4 Shinshu Takada Honzan Senshu-ji Temple (Tsu City)

The largest temple in Mie Prefecture, this is the head temple of the Shinshu Takada sect, which practices one form of Buddhism. The temple complex features many beautiful buildings, including the Mie-i-do, and a museum housing the temple's national treasures and valuable cultural artifacts.

■ 15-minute walk from Isshinden Station on the JR Line, or from Takada-honzan Station on the Kintetsu Line, or from Higashi-sshinden Station on the Ise Railway



8 Misugi Resort Hotels & Spa (Tsu City)

This is a comprehensive resort and leisure facility located in a luxurious, natural environment, with nine different facilities including an amusement park, swimming pool, ranch, and "experience factory." You can stay at the hotels while enjoying this relaxing resort complex.

■ 10-minute walk from Ise-yachi Station on the JR Line, 30-minute ride on a free shuttle bus from Sakakibara Onsen Station on the Kintetsu Line (reservations necessary)



10 Yuki Shrine (Tsu City)

The Yuki Shrine honors Yuki Munehiro, a great commander who contributed to the establishment of a new administration dedicated to Emperor Godaigo (1288-1339). Red, pink, and white single blossoms, and double-flowered plum trees have been planted in remembrance. Especially famous are the 300 magnificent Shidare plum trees.

■ 14-minute ride on a bus headed for either Yonezu or Tenpaku from Tsu Station on the JR, Kintetsu lines or Ise Railway

6 Saiku Historical Museum (Meiwa Town)

This museum is located in a part of Saiku that was the former location of the palace of the unwed Imperial Princess Saioh who served at Ise Jingu Shrine as a representative of the Emperor, and a former location of government offices. Various kinds of materials and excavated relics are displayed to aid an understanding of the history and culture of Saiku.

■ 15-minute walk from Saiku Station on the Kintetsu Line



7 Aoyama Plateau (Tsu City)

This gently sloping highland is located 600 to 700 meters above sea level. Red azaleas blanket the region from mid-April to mid-May, and a local resort offers tennis courts, a golf course, and an equestrian club.

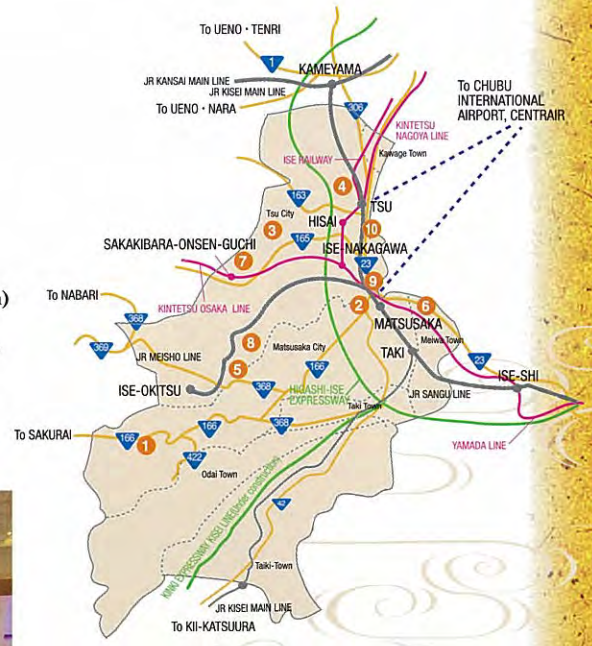
■ 2-hour walk from Nishi-aoyama Station on the Kintetsu Line



9 Matsusaka Merchant House (Matsusaka City)

Matsusaka prospered as a commercial center during The Edo period. The restored home of the Ozu family, typical of wealthy merchant families of the period, has been opened to the public. Valuable and rare products of the period are on display, offering a glimpse of the lifestyle of that period.

■ Near Matsusaka station on the JR or Kintetsu lines



Ise-Shima Area



A Landscape Blessed by the Sea

After a brief trip upstream along the sparkling waters of the Isuzu River, you can see the Ise Jingu standing solemnly in the middle of a grove of cedars. The sacred site of Ise has been a destination for travelers since ancient times. Ise is the "starting point for all journeys in Japan," and is regarded as the cradle of Japanese culture. Surrounding Ise the beautiful coastal landscapes of Ise-Shima National Park stretch as far as the eye can see. A growing number of seaside resorts offer wonderful opportunities to enjoy this marine playground. Ise-Shima ranks as one of Japan's best tourist resort areas, a place where history and natural beauty meet.



1 Meotoiwa (The Wedded-Rocks) (Ise City)

These two large rocks in the sea, fastened together by ropes, have long symbolized marriage in Japan. The scene of the sun rising between the rocks on the first day of summer is spectacular and should not be missed.

■ 15-minute walk from Futaminoura Station on the JR Line

2 Futami Sea Paradise (Ise City)

Futami Sea Paradise is an aquarium located very close to Meotoiwa and the kingdom of sea creatures with sea lions, walrus, and elephant seals. You can enjoy a show where you can touch sea creatures or take your photograph with them.

■ 20-minute walk or 5-minute bus ride from Futaminoura Station on the JR Line



3 Toba Bay Cruise / Toba Bay Dolphin Island (Toba City)

A 50-minute cruise, stopping at Toba Bay Dolphin Island, Mikimoto Pearl Island, and in front of the Toba Aquarium. At Toba Bay Dolphin Island, you can enjoy the magnificent view of Toba Bay from an observation tower and trails, as well as exciting dolphin shows.

■ 5-minute walk to Sadahama Port from Toba Station on the JR or Kintetsu lines



4 Hinjitsukan (Ise City)

This building was constructed in 1887 as a rest stop and lodging facility for distinguished guests of Ise Jingu. You will be satisfied with the stylishness of a traditional Japanese structure, not only the architecture, but also the fine garden.

■ 12-minute walk from Futaminoura Station on the JR Line



5 Okage-yokocho (Ise City)

A traditional Japanese street has been reproduced in front of the Naiku Gate of Ise Jingu. You can immerse yourself among old worshippers, and enjoy meals and shopping in this district.

■ 5-minute walk from the Ise-Jingu-Naiku-mae bus stop



6 Ise Jingu (Ise City)

Ise Jingu dates back approximately 2,000 years, and is a pillar among the most important shrines in Japan. Standing by the Isuzu River, surrounded by 800-year or older Jingu cedars, and with its gravel lane approach, the Ise Jingu presents a solemn atmosphere. Ise Jingu is divided into areas called Naiku and Geku. The main shrine building in the Naiku is constructed using the oldest architectural style in Japan: *Amaterasu Omikami*, the god worshipped in the Naiku, is the ancestral goddess of the Japanese imperial family.

■ (To Naiku) 15-minute ride to the Naiku-mae bus stop from Ise-shi Station on the JR or Kintetsu lines, or from Uji-yamada Station on the Kintetsu Line
(To Geku) 5-minute walk from Ise-shi Station on the JR or Kintetsu lines.



7 Mikimoto Pearl Island (Toba City)

Home of the world-famous Mikimoto Pearls, this island is where Kokichi Mikimoto developed the world's first cultured pearls. A museum showcases many beautiful pearl products, and various exhibits demonstrate the process of making cultured pearls. Visitors can also watch ama, female divers, demonstrate diving for pearls. Five-minute walk from JR or Kintetsu Toba stations. Ise-Shima's many aquariums offer the visitor a close-up view of members of the area's abundant marine life.

■ 5-minute walk from Toba Station on the JR or Kintetsu lines



9 Toba Aquarium (Toba City)

This is one of the world top aquariums, containing approximately 850 varieties of 20,000 sea creatures. You must visit the Mermaid Sea Zone, the only place in the world where you can see a dugong couple in captivity.

■ 10-minute walk from Toba Station on the JR or Kintetsu lines



10 Umi no Hakubutsukan (Museum of the Sea) (Toba City)

The museum has exhibits organized around seven themes on the relation of the Japanese people to the sea, including the history of the ama divers and fishing techniques indigenous to the Ise-Shima area. Japanese wooden boats and canoes from around the world are also on display.

■ 5-minute walk after a ride to the Umi-no-hakubutsukan bus stop from Toba Station on the JR or Kintetsu lines



11 Shima Marineland (Shima City)

Shima Marineland on Ago Bay offers the visitor close-up views of many interesting fish species, including sunfish and electric eel. Ama divers perform a feeding demonstration at the aquarium several times daily.

■ 2-minute walk from Kashikojima Station on the Kintetsu Line



12 Parque España-Shima Spain Village (Shima City)

Capturing the color and charm of Spain, Parque Espana features a fantastic world of elaborate parades and amusing character shows. The park also has the world's fastest suspended roller coaster, the Pyrenees, and many other popular attractions.

■ 13-minute bus ride from Ugata Station on the Kintetsu Line



13 Nemu No Sato (Shima City)

At this resort area, located on the Osaka Peninsula jutting out into Ago Bay, visitors can enjoy yachting and canoeing as well as golf, tennis, and archery. The resort also offers a natural spa and a flower garden in bloom in every season.

■ 15-minute ride to the Nemu-No-Sato bus stop from Ugata Station on the Kintetsu Line



8 Edo Wonderland Ise / Azuchi Momoyama Bunka Mura (Ise City)

This park brings to life the Sengoku Period (15th-16th centuries), when the power of the samurai was at its height. With a reconstruction of Azuchi Castle as a backdrop, period dramas and ninja action shows are performed on the main stage, offering an enjoyable presentation of Japanese history.

■ 12-minute walk from Futamiura Station on the JR Line



Iga Area



Birthplace of the Ninja

Surrounded by mountains, Iga formerly prospered as a castle town and is famous as the home of ninja spies. It is also the birthplace of the famous haiku poet Matsuo Basho. There are several historical places and vestiges of the past around the area, some of which still have the mystery and grandeur of bygone days. The mountainous areas in the southern and eastern parts of Iga are set aside as national parks and offer several opportunities to enjoy nature during all four seasons.



1 Ueno Castle (Iga City)

This castle has the highest stone walls in Japan, approximately 30 meters. This is a landmark of Ueno City, the central city of the Iga area. You will command a panoramic view of Ueno City from the third floor of the castle tower. Ueno Castle and the surrounding area are well known as major cherry blossom viewing spots. ■ 5-minute walk from Ueno-shi Station on the Kintetsu Line



2 Iga-ryu Ninja Museum (Iga City)

The ninja were spies who worked their trade 400 years ago during Japan's many years of civil war. Shrouded in mystery and surrounded by legend, the ninja were reputed to be masters of disguise and sundry other skills, including the ability to walk on water and to disappear in the blink of an eye. Inside the museum, a female ninja guide provides an introduction to the ninja dwelling and its special features. In the "Ninja Experience" Museum and "Ninja Legend" Museum, visitors can try their hands at using various ninja weapons and learn the truth about ninja and ninjutsu. ■ 5-minute walk from Ueno-shi Station on the Kintetsu Line



3 Haiseiden - Basho Museum (Haiku Sanctuary) (Iga City)

Ueno is the birthplace of Japan's most famous haiku poet, Matsuo Basho (1644-1694). Haiseiden, a memorial to Basho, is an elegant building built in the shape of the poet's travelling attire in which a statue of the poet is enshrined. ■ 5-minute walk from Ueno-shi Station on the Kintetsu Line



4 Menard Aoyama Resort (Iga City)

Located in the beautiful Aoyama Plateau, this resort offers lodging and sports facilities including a golf course and tennis courts. It also features aromatherapy sessions for relaxation, which incorporate natural fragrances from flowers, trees, and a lavender and herb garden. ■ 30-minute ride on a courtesy bus from Iga-Kambe Station on the Kintetsu Line (reservations necessary)



5 Shogatsu-do Temple (Iga City)

Kan-bodaiji Temple was constructed as a branch of Nigatsu-do, Todai-ji Temple in Nara and is known as Shogatsu-do. There is a great deal to see in this temple, including the principal god of the Eleven-Faced Kannon Bosatsu, an important national cultural treasure, which is open to the public only once every 33 years. ■ 15-minute walk from Shimagahara Station on the JR Line

9 Kaochi-dani Canyon (Nabari City)

This steep valley is famous for its kerrias and azaleas in the spring and crimson leaves in the fall. A river cuts through steep rock cliffs for eight kilometers, creating a spectacular gorge. ■ 25-minute ride to the Momiji-dani bus stop from Nabari Station on the Kintetsu Line



6 The Forty-eight Falls of Akame (Nabari City)

A series of waterfalls, both graceful and spectacular, cascade through this narrow four-kilometer valley. The area was chosen as one of the best 100 forests in Japan and includes what is considered one of the best 100 water falls in the country. The valley is also home to the Japanese Salamander Center, which has a collection of giant salamanders from around the world. ■ 10-minute ride to the Akamedaki bus stop from Akame-Guchi Station on the Kintetsu Line

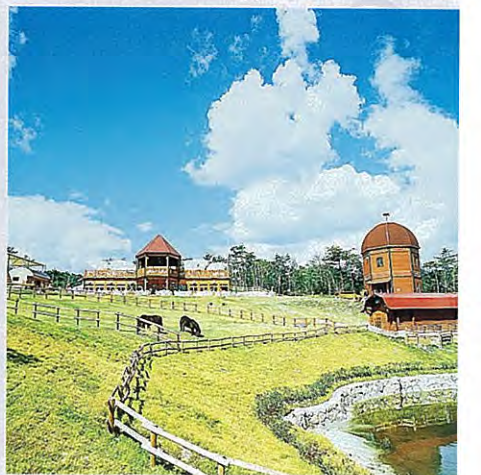
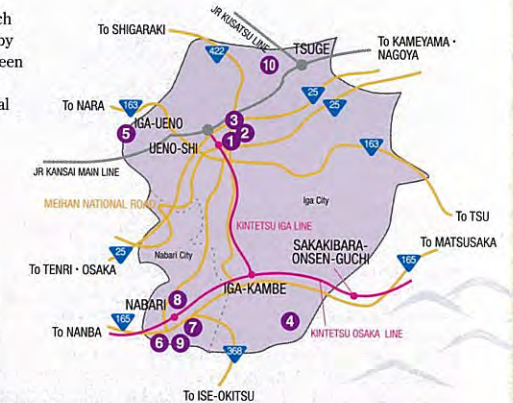
8 Old Nabari Town (Nabari City)

Nabari is located on the other side the mountain from Yamato, which was the location of the imperial court of ancient Japan. Influenced by the culture of Yamato, Nabari has prospered as a key junction between east and west in Japan. As a result, Nabari has many key historical sites; the Mihata Burial Grounds are an especially important cultural asset, of which Nabari is deservedly proud. ■ A short walk from Nabari Station on the Kintetsu Line



7 Shorenji Lake (Nabari City)

Created by a dam in 1970, this lake is surrounded by deep green mountains and features beautiful scenery throughout the year. Along the lakeside are farms and vineyards where visitors can pick strawberries (March 1 to May 30) or harvest grapes (July 20 to October 31). ■ 10-minute ride to the Shorenjiko-mae bus stop from Nabari station on the Kintetsu Line



10 Iga-no-Sato Moku-Moku Tezukuri Farm (Iga City)

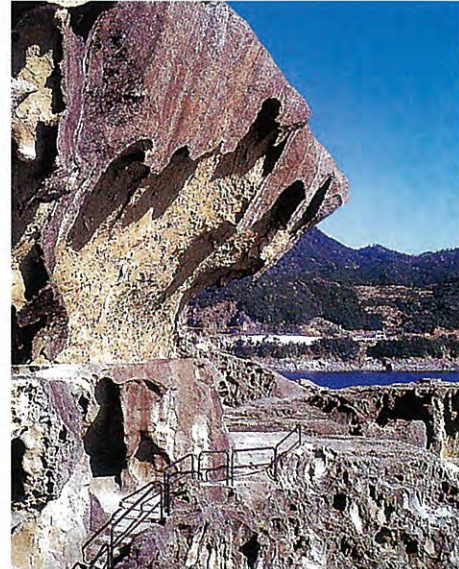
Moku Moku is a group of private farms open to public viewing. The produce, beer, and ham made by the farms are regarded highly world-wide. Visitors can enjoy the Barbecue Beer House and mini pig show as well as the wiener and pasta-making workshops. ■ 15-minutes by car from Tsuge Station on the JR Line 25-minutes by car from Ueno-shi Station on the Kintetsu Line

Higashi-Kishu Area



World Heritage Kumano Old Road and brilliant Kuroshio (the Black Sea Current)

Kumano Old Road has been designated as a World Heritage Site. The black currents of the Pacific Ocean reveals the natural beauty of a dynamic sea on the eastern coast of Kishu Peninsula, Higashi-Kishu. The southern area of Mie is a majestic, natural gallery that has been created by eons of time and the Pacific Ocean. The breeze and sunlight remind you of the exotic atmosphere of southern tropical islands and give you a relaxed feeling.



1 Onigajo / Shishiwa (Lion Rock) (Kumano City)

The rugged one-kilometer coastline facing the Kumano Sea was created by earthquakes and powerful wave erosion. According to legends, an oni (a Japanese folktales monster) lived in the rugged cliff-face now called Onigajo, and the various caves that look out to sea still seem to offer a perfect dwelling place for demons. The cliff also features a huge rock 25 meters high known as "Shishi-iwa" that resembles a lion looking out to sea. ■ 5-minute ride to the Onigajo Higashiguchi bus stop from Kumano-shi Station on the JR Line

2 Tategasaki (Kumano City)

Tategasaki is a huge wall of rock jutting into the entrance of Nigishima Bay and offers spectacular views of waves advancing into the Kumano Sea.

■ 90-minute walk from Nigishima Station on the JR Line



3 Shichiri Mihama (Kumano City)

This gorgeous stretch of curving coastline extends twenty-five kilometers from Kumano to Shingu, covered with the beautiful stone known as "Mihama pebbles." The drive along the national coastal highway offers good views of the spectacular scenery.

■ A short walk from Atawa Station on the JR Line



4 Tanemaki Gonbei-no-Sato (Kihoku Town)

This facility was constructed based on Gonbei-san, who actually lived here and is a character in a famous folk song: "When Gonbei plants his seeds, crows will begin picking one out of every three..." A Japanese garden and items associated with Gonbei-san are exhibited here.

■ 7 minutes by car from Aiga Station on the JR Line

5 Doro Gorge (Kumano City)

Water reflecting the fresh greenery of summer and autumn leaves in the fall, and cliffs covered by virgin forests, create the mysterious beauty of nature. You may also enjoy a cruise on a jet boat. Doro Gorge is noted for Rhododendron indicum in May.

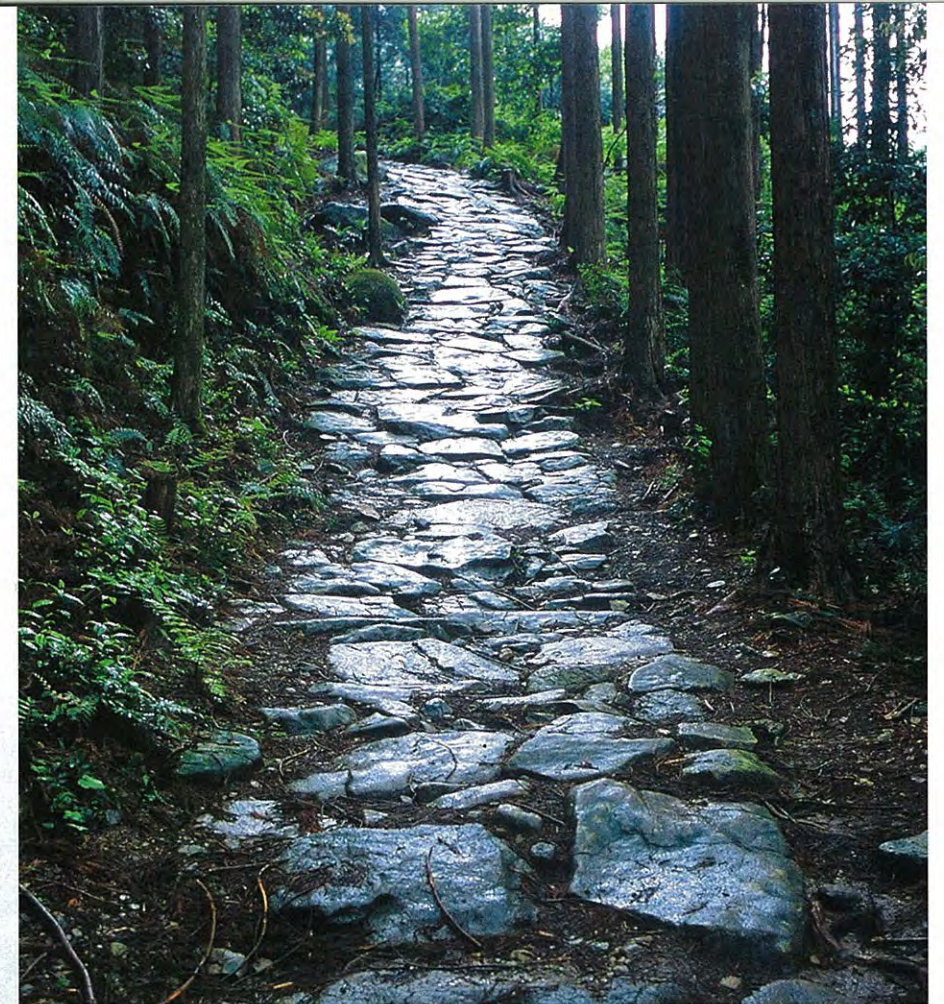
■ Take the Nanki-Koiki bus, Kumano Kodo-Seiryuso Line to the Doro Ohashi bus stop, from Kumano-shi Station on the JR Line



Matsumoto Pass



Yokogaki Pass

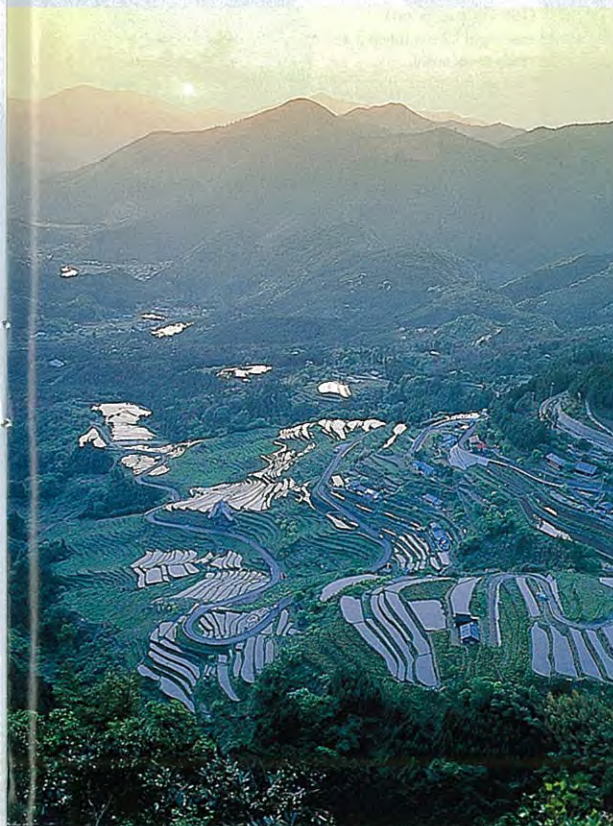


Magose Pass

6 World Heritage Kumano Old Road (Owase City, Kumano City, etc.)

Kumano Old Road has been designated as a World Heritage Site. Formerly a route for pilgrims journeying between shrines on Kumano Sanzan Mountain, regarded as the home of the gods Hongu, Shingu, and Nachi, the Kumano Old Road is now used as a hiking trail. The cobblestone road, blanketed with moss, winds through a cypress forest, and occasionally historical ruins and guideposts are visible along it.

■ (Magose course) 10-minute ride to the Washige bus stop from Aiga Station on the JR Line



8 Maruyama Senmaida Paddy Fields (Kumano City)

Here, Japan's lost rural landscape can be seen as it formally was. Over 1300 rice paddies terraced into the mountainside create a beautiful landscape that varies with the seasons.

■ Take the Nanki-Koiki bus, Kumano Kodo-Seiryuso Line to the Senmaida-Tori-toge Iriguchi bus stop, from Kumano-shi Station on the JR Line



7 Michi-no-Eki Kiho Town Sea Turtle Park (Kiho Town)

This is a park located in Kiho Town where sea turtles are a protected species. You can very closely observe sea turtle families. Products with sea turtle character images can be purchased here.

■ 10-minute walk from Kiida Station on the JR Line



Gastronomic Delights in Mie

Welcome to the kingdom of gourmet feasting!

Mie is a haven of fresh delicacies from the sea and mountains. Here you'll find a dish to suit your tastes whatever they might be.



Abalone (Ise-Shima Area) [Mie Brand]
Since ancient times, abalone continues to be treasured as an offering to the gods. Woman divers, called ama, carefully catch them even now, while preserving their ecosystem as a future resource.



Matoya oysters (Shima City) [Mie Brand]
Thanks to nutrients flowing in from three rivers, Matoya bay is abundant with plankton that are food for oysters. You may enjoy delicious, raw Matoya oysters.



Dengaku (Iga City)
Tofu dengaku is barbecued slices of tofu with sweet miso sauce, skewered on a bamboo stick. It is a local specialty, popular among the people of Mie.



Tekone Sushi (Ise-Shima Area)
This dish made with fresh-cought katsuo (bonito) seasoned with soy sauce, was created by local fishermen as a ready-to-eat sushi.



Ise-ebi Lobster and Seafood (Ise-Shima Area) [Mie Brand]
The sweet, pink, almost translucent Iseebi Lobster melts in your mouth, and this king of shrimp is delicious used in both Western and Japanese dishes. Other excellent local varieties of seafood include oysters, abalone, red snapper, and sazae.



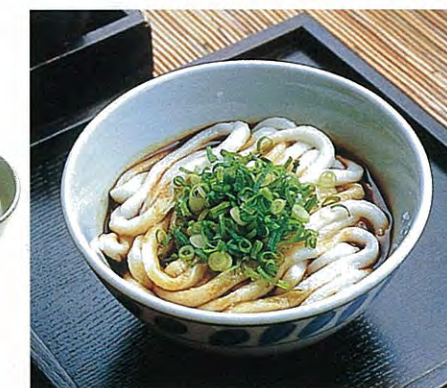
Matsusaka Beef (Matsusaka City) [Mie Brand]
This high-quality beef is from prime Japanese Black Angus cattle which are fattened on beer and massaged with distilled spirits in order to enhance the texture of the meat. This delicacy can be enjoyed as steak, sukiyaki, in a shabu-shabu pot, or barbecued as yakiniku.



Akafuku Rice Cakes (Ise City)
Akafukumochi has been popular as a specialty of the town surrounding Ise Jingu since the middle of the Edo Era (1707). It is a rice cake, called mochi, covered with plenty of bean jam that is not too sweet and with an elegant flavor.



Mehari Sushi (Kumano City)
Mehari are rice balls wrapped around takana (Japanese pickled vegetables). They are named after the manner you must eat this food. Mehari (wide-eyed) sushi is so big that you have to open your eyes as wide as your mouth to eat it.



Ise Udon (Ise City)
This famous udon dish of Ise includes plump noodles served in a dark broth seasoned with a unique tamari soy sauce and sweet mirin (rice vinegar) and flavored with green onions and red pepper.



Clams (hamaguri) (Kuwana City)
Kuwana City is famous for Kuwana-no-yaki-hamaguri (grilled clams) since the Edo Era (1603-1867). They are a blessing from the brackish delta where fresh water from the three Kiso rivers and seawater are nicely mixed.

Souvenirs of Mie

Here are some of Mie Prefecture's most excellent items, incorporating craftsmanship skills, techniques and traditions that have been inherited from ancient masters.

Mie Brand

The Mie Brand signifies a product of Mie Prefecture, richly endowed by nature and certified by the government of Mie Prefecture.

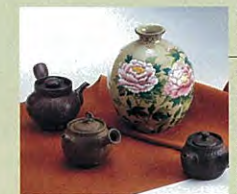


Pearls (Toba City and other areas)
It is the abundance of nature in Ago Bay, the home of pearls, and human skill that produces these high quality pearls.



Ise tea (Northern - Central areas)
Marking the third largest production region of Japan, Ise tea may be characterized by its rich flavor and mild taste.

Traditional Arts and Crafts in Mie Prefecture



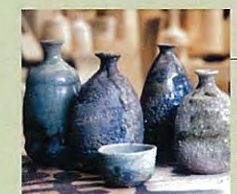
Yokkaichi Banko Pottery (Yokkaichi City)
Banko pottery began its own style ever since master potters stamped on their works a wish to have their pieces passed down to future generations, forever. These teapots are very famous.



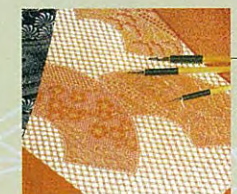
Suzuka ink (Suzuka City)
Suzuka ink is loved by many calligraphers. It is said that this ink was discovered after burning pine resin.



Iga Kumihimo (Iga string art) (Iga City)
Kumihimo are beautiful, braided cords with silk, gold, and silver threads. Most of the kumihimo in Japan are produced here.



Iga pottery (Iga City)
Iga pottery came into the spotlight as exquisite tea utensils during the Muromachi Era (1333-1573) and Azuchi-Momoyama Era (1573-1603).

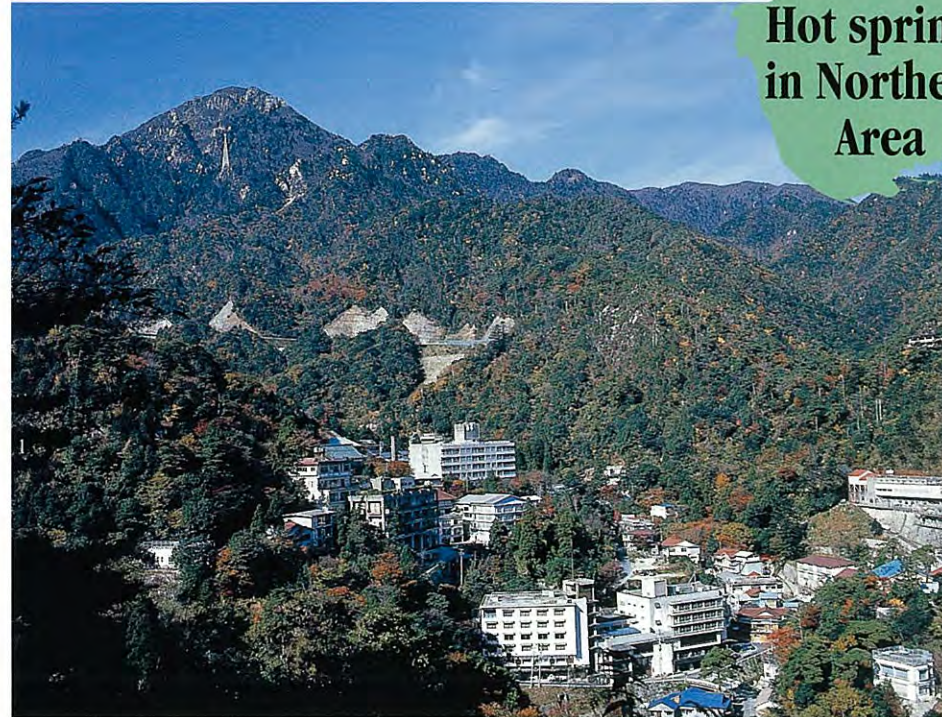


Ise Pattern papers (Suzuka City)
Ise pattern paper is a beautiful paper used for dyeing kimonos, carefully engraved with carving knives.

Hot springs in Mie

Please ease your mind in our healing hot springs.

A hot springs village surrounded by mountain scenery...an open-air bath viewing the sea... Hot springs for healing your soul are everywhere in Mie, blessed by the abundance of nature.



Yunoyama hot springs

Hot springs in Northern Area

Yunoyama hot springs are located at the foot of Mt. Gozaisho. Please enjoy the hot springs and relax with nature. At Nagashima hot springs and Suzuka Circuit hot springs, you can enjoy the amusement park first, and then ease your body in the healing waters of the hot springs.

- 1 Nagashima hot springs (Kuwana City)
- 2 Yunoyama hot springs (Komono Town)
- 3 Suzuka Circuit hot springs (Suzuka City)



Suzuka Circuit hot springs

Hot springs in Central Area

Hot springs in the central area, such as the Sakakibara and Hinotani hot springs, are surrounded by a natural mountain setting. Please relax in these hot springs richly endowed by nature and enjoy each of the four seasons in Japan.

- 4 Sakakibara hot springs (Tsu City)
- 5 Hinotani hot springs (Tsu City)



Sakakibara hot springs



Hinotani hot springs



Hot springs in Ise-Shima Area

The most attractive points of hot springs in the Ise-Shima area are open-air baths with a gorgeous view of the sea. Open-air baths are available at most accommodations in both the Toba and Shima areas.

- 6 Hot spring inns in Toba City (Toba City)
- 7 Shima Hot Spring Village (Shima City)



Shima Hot Spring Village

Hot springs in Iga Area

Akame hot springs are located nearby a famous waterfall, Akame Shijuhattaki Falls Ravine. Kaochidani hot springs will also provide you with the beautiful scenery of the ravine. You can enjoy hot springs together with beautiful views of Japan here in Iga.

- 8 Akame hot springs (Nabari City)
- Kaochidani hot springs (Nabari City)

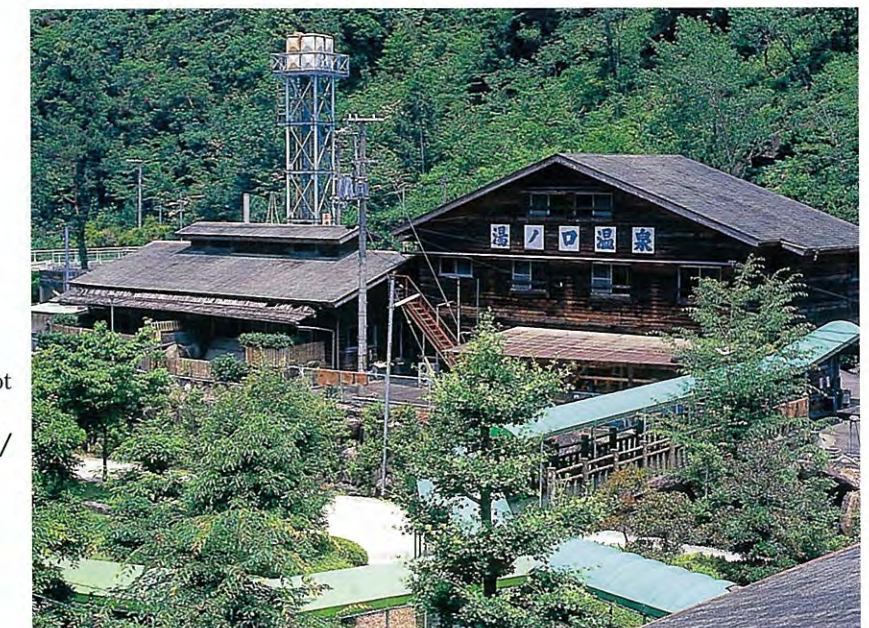


Akame hot springs

Hot springs in the Higashi-Kishu Area

There are several hot springs in the deep, natural setting of Kumano. If you would like to soak yourself in hot springs and nurse your soul back to balance, we recommend the hot springs here in Higashi-Kishu.

- 9 Arikuji hot springs / Kanoyu hot springs / Furusato hot springs (Kihoku-cho)
- 10 Atashika hot springs / Kumano hot springs (Kumano City)
- 11 Yunokuchi hot springs / Iruka hot springs (Kumano City)



Yunokuchi hot springs

Festivals in Mie

Within Mie Prefecture remain longstanding traditions and customs, and glamorous dancing that highlight each season. Festivals that borrow heavily from local traditions are held in all parts of Mie Prefecture, throughout the year.



Ishitori Festival

Festivals in Northern Area



Souhei Festival

Tado Festival (Kuwana City) April 4th and 5th

The Tado Festival is held at Tado-Taisha Shrine to perform the most renowned Horseback Climbing Ceremony in order to beseech the gods for a good harvest during the year. Young boys dressed as warriors climb up an extremely steep slope approximately 3 meters high while on horseback.

- 5-minute bus ride to the Tado-Taisha Mae bus stop from Tado Station on the Kintetsu Line

Inabe Shrine Taisha Festival (Toin Town) Beginning of April

It is said that this festival was started to raise the morale of young people. Various ceremonies are dedicated to this, including Yabusame (archers clad in the hunting outfit of medieval warriors shoot at three targets as they race by on horseback) and a horseback climbing ceremony.

- 15-minute walk from Toin Station on the Hokusei Line of Sangi Railway

Sekijuku Summer Festival (Kameyama City) End of July

During the day, a miniature shrine is drawn through Sekijuku (Seki Town), and four floats are paraded during the night. Seki was a town for travelers on the old Tokaido Road, which once flourished in the Edo Era (1603-1867).

- 5-minute walk from Seki Station on the JR Line

Grand Yokkaichi Festival (Yokkaichi City) Beginning of August

Various events and traditional events such as traditional dancing are performed in Yokkaichi City.

- 10-minute walk from Yokkaichi Station on the JR or Kintetsu lines

Ishitori Festival (Kuwana City) Beginning of August

This is one of the strangest Japanese festivals, called "the noisiest festival in Japan." Over thirty floats continue ringing bells and beating drums for three consecutive nights. This is an extremely vigorous and unique festival! It has been designated as a prefectural intangible folk cultural asset.

- 20-minute walk from Kuwana Station on the JR or Kintetsu lines

Souhei Festival (Komono Town) Beginning of October

Souhei Festival is an autumn festival held among the brilliantly colored leaves of fall in the Yunoyama hot springs area and Gozaisho Ropeway.

- 20-minute walk from the Yunoyama-onsen bus stop after a 10-minute ride from Yunoyama Onsen Station on the Kintetsu Line

Ise Grand Divine Music Performance (Kuwana City) End of December

This is a shrine ritual of dancing while wearing lion masks for the purpose of exorcising evil spirits. Professional dancers who perform all over Japan gather in the Masuda Shrine at the end of December to perform these gorgeous dancing rituals.

- 5-minute walk after a ride to the Tayu bus stop from Kuwana Station on the JR or Kintetsu lines

Festivals in Central Area



Saioh-matsuri Festival

Saioh-matsuri Festival (Meiwa Town) First Saturday and Sunday of June

The unwed princess Saioh paraded from Kyoto to Saiku with hundreds of attendants in past days of glory. This festival reenacts that brilliant parade.

- A short walk from Saiku Station on the Kintetsu Line

Ohichiya (Tsu City) Middle of January

This event is held for seven days and seven nights. Many street vendors line up before the gates of Senshu-ji Temple, and approximately 100,000 people visit every year.

- Near Ishinden Station on the JR Line

Niu Taishi Spring Festival (Taki Town) End of April

Praying for good luck and traffic safety, many events are held such as a children's parade and handing out rice cakes, with long lines of street vendors.

- Ride to Oishi bus stop from Matsusaka Station on the JR or Kintetsu lines, change to the Sonmin bus, and get off at the Niu Taishi-mae bus stop

Kitabatake Shrine Spring Festival (Tsu City) Beginning of May

People associated with the Kitabatake family gather from Mie and other prefectures, and hold diversified events during the festival.

- 40-minute ride to the Kitabatake Jinja-mae bus stop from Ise-takehara Station on the JR Line

Oyodo Gion Festival (Meiwa Town) Middle of June

This dynamic festival has been held since the middle of the Edo Era. Floats are drawn through the town and a fireworks festival is held around Oyodo Port in the evening.

- 10-minute walk after a 15-minute ride to the Oyodo bus stop, from Akeno Station on the Kintetsu Line

Tsu Festival (Tsu City) Beginning of October

This is the largest festival of Tsu City held in October. The event includes a spectacular parade of traditional performances such as *Toujin* dancing (originally from Korea), *Shago-uma* (people dressed in Samurai costumes and masks who appear to be riding on horse replicas), an historic pageant of one of the area's past lords, Takatora Todo, and *Anatsu Yosakoi*, the Citizen's Dance.

- 15-minute walk from Tsu-shinmachi Station on the Kintetsu Line

Oinai Festival (Taki Town) Middle of October to the middle of November

Many events are held, such as shows, handing out rice cakes, lotteries for prizes, and sales of local specialties.

- 17 minutes by car from the Seiya-Taki exit on Ise Expressway

Festivals in the Ise-Shima Area



Geita Festival (Toba City) January 1st

This brisk festival is a ritual of the Yashiro Shrine held at Kami Island at dawn on New Year's Day. All men on the island use bamboo poles to hold up a large ring two meters wide which represents the sun, and then they drop it.

- 50-minute ride on a ship from Sadahama Port, which is in front of Toba Station on the JR or Kintetsu lines

Spring / Autumn Kagura Festivals (Ise City) Spring: beginning of April; autumn: middle of September

These festivals are held twice a year in spring and autumn to express thanks to the gods and pray for the peace of citizens. Jingu-Kagura, a Shinto dance, is performed for the public on a special stage in the Naiku of Ise Jingu.

- A short walk from the Naiku-mae bus stop from Ise-shi Station on the JR or Kintetsu lines

Shirongo Festival (Toba City) Middle of July

Fish-catching by women divers, called ama, is an ancient Japanese fishing method. The women divers compete to find abalones. People pray for bumper catches and safety in the sea, and dedicate the first abalone of the competition to the gods.

- 15-minute walk from Sugashima Port after an 18-minute ride on a ship from Sadahama Port, which is located in front of Toba Station on the JR or Kintetsu lines

Ise-ebi Lobster Festival (Shima City) Beginning of June

Expressing gratitude to the sea, mainly for Ise-ebi lobsters, and with hopes for a bumper harvest, people hold a huge imitation Ise-ebi lobster 6.5 meters long and parade along the coast.

- 20-minute ride to the Hamajima bus stop from Ugata Station on the Kintetsu Line

Ise Jingu National Fireworks Festival (Ise City) End of July

Fifty groups of pyrotechnic experts from all over Japan are dedicated in their efforts to launch approximately 9,000 magnificent fireworks, creating a great symphony of fire, sound, and light as they compete in the night sky over the clear waters of the pristine Miya River.

- Special shuttle buses operated from Ise-shi Station and Ujiyamada Station

Waraji Festival (Shima City) End of September

This amazing festival is based on "Dandarabocchi," a character in a folktale, and has been designated as an intangible cultural asset of Mie Prefecture.

- Ride to the Nakiri-gyoko Uoichiba-mae bus stop or Nakiri-shogakko-mae bus stop from Ugata Station on the Kintetsu Line

Ise Grand Festival (Ise City) Middle of October

A 112-year-old festival, in which a miniature shrine, traditional dancing, and floats decorated with lanterns parade through Ise City and highlight the Ise Road in autumn.

- A short walk from Ise-shi Station on the JR or Kintetsu lines

Festivals in the Iga Area



Wakako Festival (Nabari City) Beginning of January

It is said that this festival has a history of more than approximately 400 years. People pray for the health and growth of boys born during the past year and of children adopted from other areas by holding this festival.

- 5-minute walk after a ride to the Kanjo-bashi bus stop from Nabari Station on the Kintetsu Line

Yoka Ebisu (Nabari City) Beginning of February

Fukukazari are sold, which are good-luck charms for a successful business, and traditional Shichihokujin (seven gods of good luck) dancing is performed. Clams are sold here, a popular specialty of Kuwana City, and a garden tree market is also held during the festival.

- 10-minute walk from Nabari Station on the Kintetsu Line

Ueno Tenjin Festival (Iga City) End of October

This festival has more than 400 years of tradition, autumn colors of the Iga-Ueno area, and is the largest festival within Iga, featuring a grand procession of a gorgeous miniature shrine, funny demons, and nine danjiri floats.

- 5-minute walk from Ueno-shi Station on the Kintetsu Line

Yabuta Shrine Dada Festival (Iga City) Middle of February

Dancers beat drums mounted around their waists and dance for a good harvest, with other dancers wearing demon costumes dancing around them.

- 8-minute ride to the Kawai bus stop from Sanagu Station on the JR Line

Aekuni Shrine Shishi Kagura (Shinto music and dancing)(Iga City) Middle of April

This festival is held at Aekuni Shrine and is designated as an intangible folk cultural asset of Mie Prefecture. Lions dance in a spectacular way to ward off evil spirits.

- 5 minutes by car from the Iga-Ichinomiya exit on the Meihan National Highway

Castle Festival (Iga City) September to January

Traditional events such as drum competitions, contests of Japanese archery and kendo, and exhibitions of paintings, bonsai, and chrysanthemums are held in Ueno Park, as well as the main event, Takigunohi (Noh plays by firelight).

- 5-minute walk from Ueno-shi Station on the Kintetsu Line

Basho Festival (Iga City) Middle of October

Honoring the literary merits of the Japanese haiku poet Matsuo Basho, haiku competitions, displays of historical objects, special exhibitions and other events are held.

- 5-minute walk from Ueno-shi Station on the Kintetsu Line

Festivals in the Higashi-Kishu Area



Kumano Grand Fireworks Display (Kumano City) Middle of August

This is a fireworks display with a history of over 300 years. Approximately 10,000 fireworks will color the summer night sky while being reflected upon the Sea of Kumano. You cannot miss experiencing this display of fireworks over the sea.

- 5-minute walk from Kumano-shi Station on the JR Line

Funa Danjiri (Kihoku Town) Beginning of January

Around thirty young men place a bonito on a fishing pole, ride on a float shaped as a ship and parade ebulliently in the town, praying for a good catch of fish.

- 20-minute walk from Kii-nagashima Station on the JR Line

Ya Ya Festival (Owase City) Beginning of February

The Ya Ya Festival is also called the "battling festival of nearly-naked men." In addition to the battles, young men in white kimonos gather and perform a feudal lord's procession with traditional dancing.

- 20-minute walk from Owase Station

Tanemaki Gonbei Festival (Kihoku Town) Middle of March

A festival for "Gonbei-san," known as a character from a children's song, is held at Hosen-ji Temple. Local dancing and dances dedicated to the gods are performed.

- 7 minutes by car from Aiga Station on the JR Line

Kihoku Lantern Festival (Kihoku Town) End of July

Lanterns are pulled through the town during the day and a huge lantern called the Dragon, 22 meters long, rises up against approximately 3,000 fireworks over the sea in the evening.

- 20-minute walk from Kii-nagashima Station on the JR Line

Kiwa Fire Festival (Kumano City) Beginning of August

In the main event of the festival, Hashira Matsuri, people light torches to chase away all evil spirits with fire, while praying for the safety of the boats and for a great catch of fish.

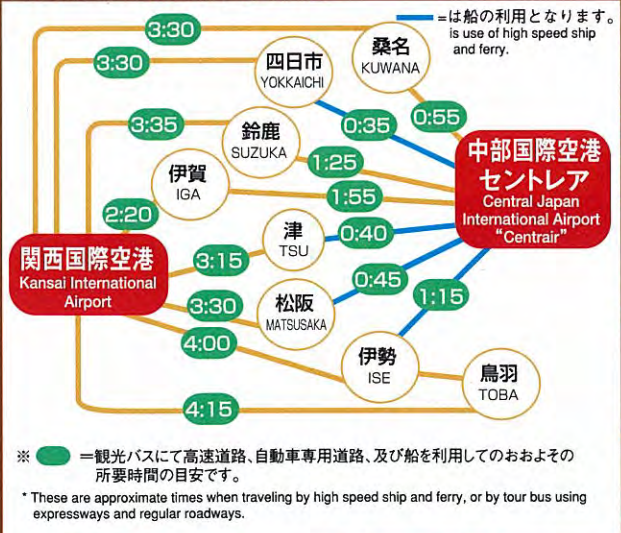
- 50-minute ride to the Ogawa-guchi bus stop from Kumano-shi Station on the JR Line

Sekibune Festival (Kihoku Town) Middle of October

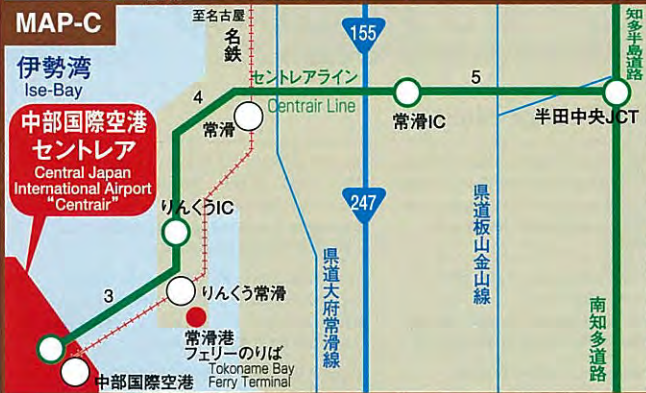
Forty young men carry a big Sekibune, or fighting ship, and parade in the town, praying for a good catch of fish and for the growth of the town.

- 5-minute ride to the Hikimoto bus stop from Aiga Station on the JR Line

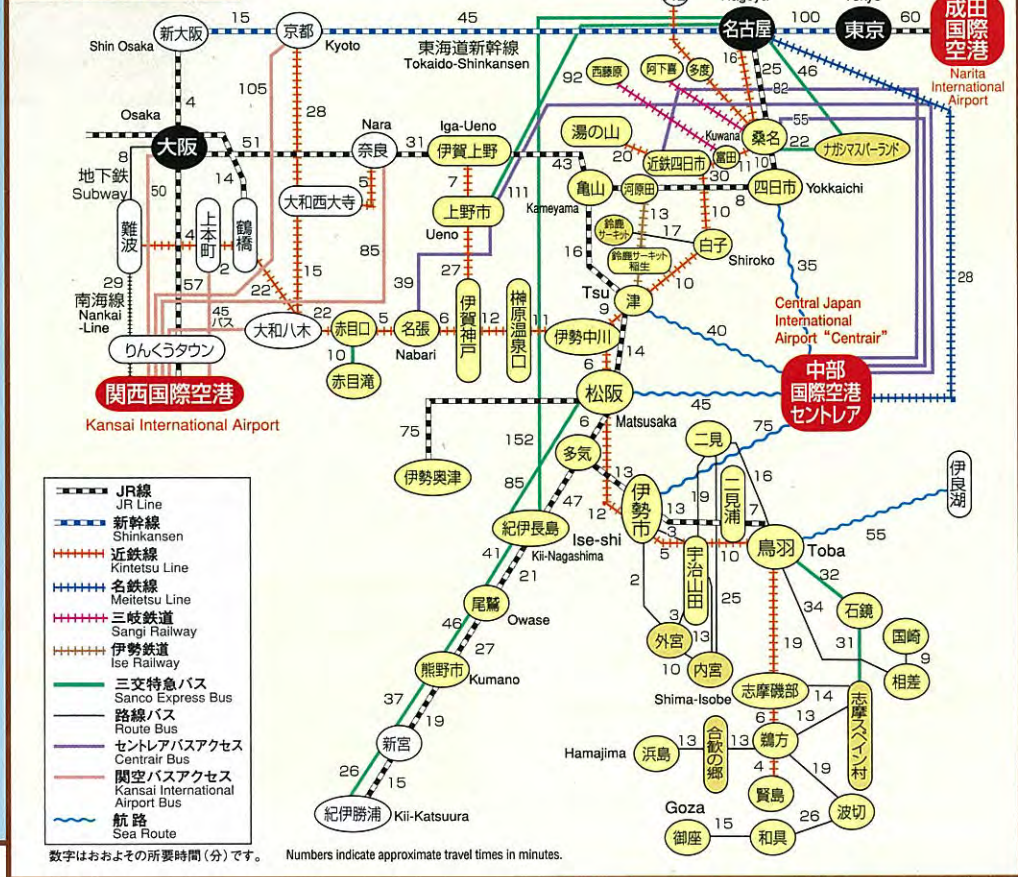
Time required to major points from Chubu International Airport and Kansai International Airport



Access Guide for excursions
Major routes and required times



Public transportation



Complete Map of Mie



Please keep this map open and use it as a reference for the detailed information contained in this brochure.
The numbers referencing information in the brochure are on the map to assist you in finding the location.

- JR新幹線 JR Shinkansen
- JR線 JR Line
- 近鉄線 Kintetsu Line
- 私鉄 Private Line
- 高速道路 Expressway
- 主要道路 Major Road
- 航路 Sea Route
- 空港 Airport

Economical and Convenient Tickets

[KINTETSU RAIL PASS]

You can use the Kintetsu Line as much as you like! This is so economical and convenient and you will receive three free express tickets (good for five days!) with your purchase of this pass. Fare for adults: 3,500 yen / children: 1,750 yen

<http://welcome.kankomie.or.jp>

Tokai Welcome Card

With this card, you will receive discounts for accommodations and public transportation, and from restaurants, shops, sightseeing facilities, and other discounts in Aichi, Gifu, Mie, and Shizuoka prefectures. You can have your own card simply by printing it from this website.

<http://www.j-heartland.com/>

Kansai Passport

You can transfer freely between routes and use reserved seats on limited express trains. Moreover, you will receive discounts of the entrance fees into cultural and sightseeing facilities.

<http://www.kansai.gr.jp>

Japan Rail Pass

All lines of the JR Group, including the Shinkansen (excluding all seats on Nozomi trains), limited express, express, rapid trains, local trains, local lines of JR buses, and JR ferry lines are available for your use with this single pass.

<http://www.japanrailpass.net>

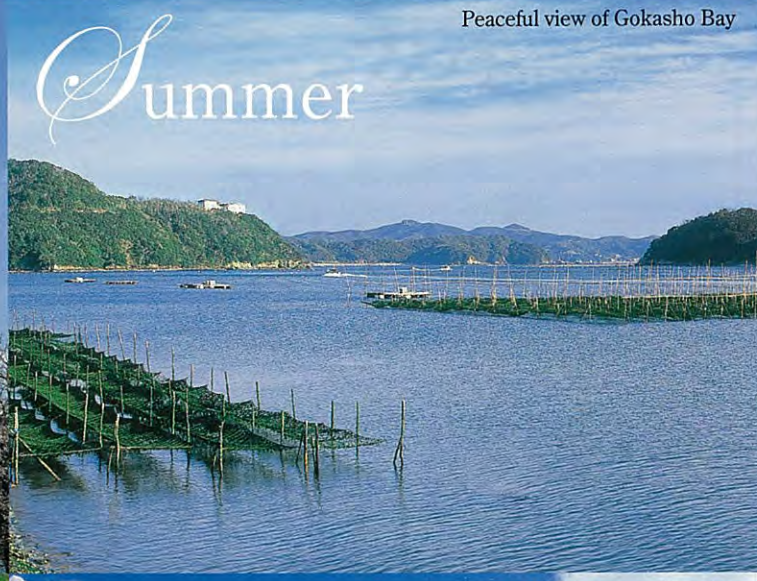
The Four Seasons in Mie

Located roughly in the center of Japan, each of the four seasons in Mie is very distinct from the others, and will inspire you with a broad range of seasonal scenery: cherry blossoms in spring, the shimmering ocean in summer, brilliant foliage in autumn, and snow scenes in winter.



Cherry blossoms at Ueno Castle

Spring



Peaceful view of Gokasho Bay

Summer



Autumn foliage at Shobo-ji Temple

Autumn



Silver forest at Gozaisho

Winter

Cherry Blossom Sites

Cherry blossoms at Tado-Sanjo Park (Kuwana City); Beginning of April

- 60-minute walk from Tado Station on the Kintetsu Line

Rows of cherry blossom trees along the Kaizo River (Yokkaichi City); Beginning of March to beginning of April

- 10-minute walk from Akuragawa Station on the Kintetsu Line

Azaleas at Inou Shrine (Suzuka City); Beginning of March to beginning of April

- 5-minute walk after a 10-minute ride to the Inou bus stop from Shiroko Station on the Kintetsu Line

Cherry blossoms at the Hisai Base of the Japan Ground Self-Defense Forces (Tsu City); Beginning of March to beginning of April

- 5-minute walk from Hisai Station on the Kintetsu Line

Cherry blossoms at Mitake (Tsu City); Beginning to middle of April

- 5-minute walk after a 10-minute ride to the Sugihira bus stop from Ise-okitetsu Station on the JR line

Cherry blossoms at Nameri Lake (Matsusaka City); Beginning of April

- 15 minutes by car from Ise-nakagawa Station on the Kintetsu Line

Cherry blossoms at Otaki-kyo Nature Park (Taiki Town); Beginning of April

- 20-minute walk from Takihara Station on the JR Line

Cherry blossoms by the Miya River (Ise City); Beginning of April

- Ride to the Watarai-bashi bus stop from Ise-shi Station on the JR or Kintetsu lines

Cherry blossoms at Yokoyama Observation Tower (Shima City); Beginning of April

- 10 minutes by car from Ugata Station on the Kintetsu Line

Cherry blossoms at Tomoyama Park (Shima City); Beginning of April

- 20 minutes by car from Ugata Station on the Kintetsu Line

Cherry blossoms by the Kouchi River (Minami-ise Town); Beginning of April

- 97-minute ride to the Kouchi bus stop from Ise-shi Station on the JR or Kintetsu lines

Cherry blossoms at Ueno Park (Iga City); Beginning to middle of April

- 3-minute walk from Ueno-shi Station on the Kintetsu Line

Cherry blossoms at Chuo Park (Nabari City); End of March to middle of April

- Ride to the Natsumi bus stop from Nabari Station on the Kintetsu Line

Cherry blossoms at Kamikawa Town (Kumano City); Beginning of April

- 5-minute walk after a ride to the Konoue-chugakko-mae bus stop from Kumano-shi Station on the JR Line

Autumn Foliage Sites

Autumn foliage at Gozaisho-Dake (Komono Town); Middle of October to middle of November

- 10-minute walk after a ride to the Yunoyama-onsen bus stop from Yunoyama-onsen Station on the Kintetsu Line

Autumn foliage at Ugakei (Inabe City); Middle to end of November

- 20 minutes by car from Daian Station on the Sangi Railway, via Tomida Station on the Kintetsu Line

Autumn foliage at Shobo-ji Temple (Inabe City); Middle to end of November

- 30-minute walk from Nishi-Fujiwara Station on the Sangi Railway, via Tomida Station on the Kintetsu Line

Autumn foliage at the gardens of Kitabatake Shrine (Tsu City); Beginning to the end of November

- 60 minutes by car from the Hisai Exit of Ise Expressway

Autumn foliage at Kouchi-keikoku (Tsu City); Middle to the end of November

- 10-minute walk after a 30-minute ride to the Ichiba bus stop from Tsu-shinmachi Station on the Kintetsu Line

Autumn foliage at Okukahada-kyo (Matsusaka City); Beginning of November to beginning of December

- Ride to the Hotel Smeall bus stop from Matsusaka Station on the JR or Kintetsu lines

Autumn foliage in the Naiku of Ise Jingu (Ise City); Beginning to middle of November

- Take a bus to the Naiku-mae bus stop from Ise-shi Station on the JR or Kintetsu lines

Autumn foliage at Shirafuji Falls (Iga City); Middle of October to beginning of November

- 10 minutes by car from Shindo Station on the JR Line

Autumn foliage at Akame Shijuhattaki Falls (Nabari City); Beginning to the end of November

- Ride to the Akame-taki bus stop from Akame-guchi Station on the Kintetsu Line

Autumn foliage at Kaochi-dani (Nabari City); Beginning to middle of November

- Ride to the Momiji-dani bus stop from Nabari Station on the Kintetsu Line

Autumn foliage at Dorokyo (Kumano City); Middle of November to middle of December

- Ride to the Shiko-josenjo bus stop from Shingu Station on the JR Line; 2-hour cruise aboard a jet boat



Mie Prefectural Government

Tourism and Exchange Division

Tourism Bureau

13 Komei-cho, Tsu City, Mie 514-8570, JAPAN

TEL: (059) 224-2847 FAX: (059) 224-2482

<http://welcome.kankomie.or.jp/>

E-mail: kanko@pref.mie.jp

