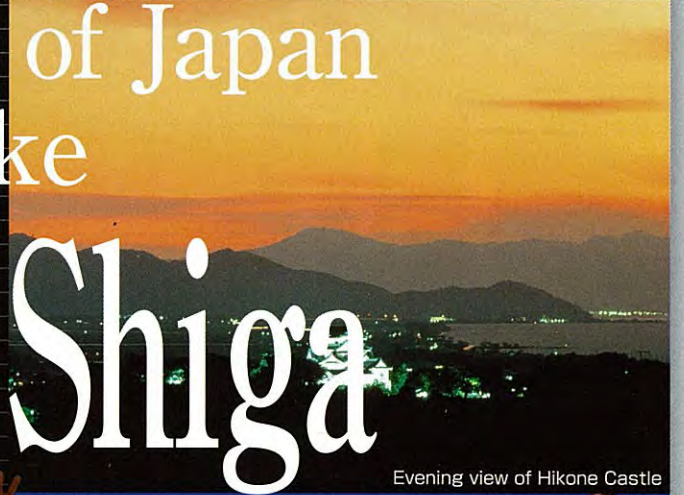




Miidera Temple



Evening view of Hikone Castle



Hina doll

Shigaraki ware



Enryakuji on Mt. Hiei/Lighting of the konponchudo

The four seasons of Japan
Japan's largest lake
Journey to Shiga



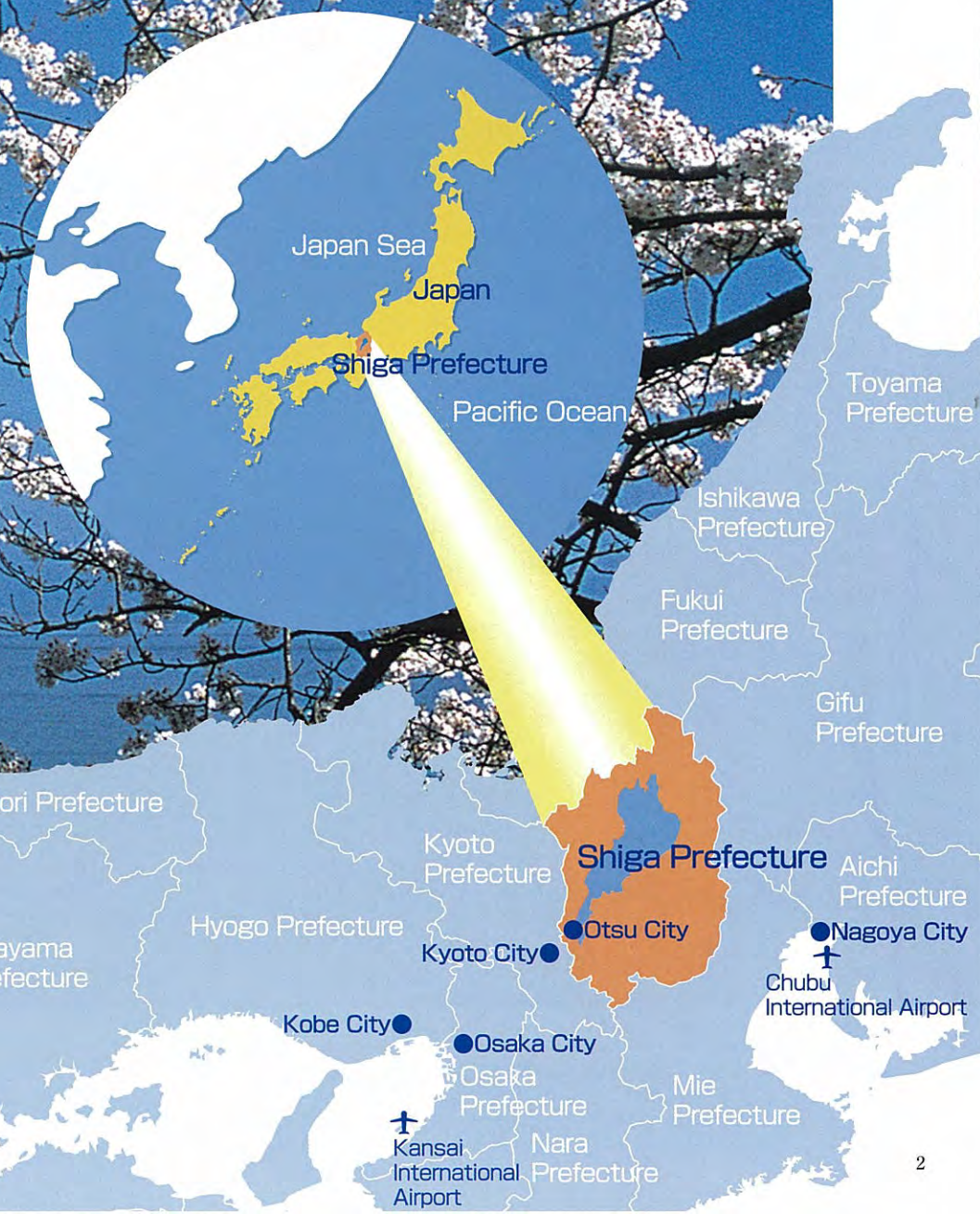
go. biwako
en.biwako-visitors.jp

Shiga Prefecture

Shiga Prefecture: The quintessential Japan

Shiga Prefecture, at the heart and crossroads of Japan, has flourished since ancient days. Today, Shiga remains a convenient base for traveling in Japan, offering easy access to Kyoto and Osaka as well as Kyushu and Tokyo. Lake Biwa, the largest lake in Japan, offers visitors opportunities to enjoy four distinct seasons. Nature, tradition, culture, history, art, food: everything good about Japan is right here in Shiga Prefecture.

Oku Biwako Drive is a 18.8 km road connecting Tsukide Toge and Oura, and it offers stunning lakeside and mountain views. From Tsuzuraozaiki lookout, you can enjoy a panoramic view of Chikubu Island and more. On Oku Biwako Parkway, you can view about 4000 cherry trees in spring and a collage of colors in the fall.



Shiga offers plenty of historic spots to visit: Shiga boasts Hikone Castle (a national treasure) and ancient temples such as Hieizan Enryakuji.



Shiga provides plenty of opportunities to come in contact with nature, and any time of the year you can encounter breathtaking views. You can spend your holiday at the mother lake, Biwa, the biggest lake in Japan, enjoying various attractions such as historic buildings, nostalgic views, traditional crafts and cultural experiences, seasonal lakeside food and local cuisine, high-quality hot springs, waterfront activities and sports.

1 Hieizan Enryakuji

Enryakuji, the head temple of the Tendai sect of Buddhism, encompasses a large area on Mt. Hiei. Its origins can be traced back to the end of the Nara period, when Saicho established a tea hut on the mountain. About 1200 years have passed since Saicho founded the Tendai sect. In 1994, the temple was registered as a World Cultural Heritage site. <Konan - South of the Lake>

2 The lighting of Hikone Castle

Having taken about 20 years to build, Hikone Castle is one of the greatest Japanese castles along with Himeji Castle. Hikone Castle is listed as one of the Eight Scenes of Lake Biwa (Biwako Hakkei), and is designated as a National Special Historic Site. When lit at night, the castle glows quietly and solemnly, projecting a different image than during the daytime. <Koto - East of the Lake>

3 Birthplace of Koka ninja

You can experience the world of Ninja such as the Karakuri house and the Shuriken knife thrower in Koga region, known as the birthplace of Ninja. <Konan - South of the Lake>

4 Kongorinji Temple

Kongorinji Temple is a Tendai Buddhist temple founded by Gyogi and designated as one of the Koto Sanzan temples. Monasteries including the main hall (a national treasure) stand next to each other, and the three gardens are designated as places of scenic beauty. In early summer, about 2000 hydrangea plants bloom near the temple gate, main hall and three-story pagoda. <Koto - East of the Lake>

5 Hyakusaiji Temple

Hyakusaiji Temple, a temple with the oldest history in Omi, is noted for its connection with Prince Shotoku. It is the southernmost of the three Koto Sanzan temples. Between May and June, azalea flowers bloom in bright colors in the chisen kaiyushiki garden (strolling pond garden) at the main hall, Kikein. Views of the Suzuka Mountains are incorporated into the garden, using the "shakkei (borrowed landscape)" method. <Koto - East of the Lake>

6 Saimyoji Temple

Saimyoji Temple is known as the "temple of flowers," the northernmost of the Koto Sanzan temples. The main hall and three-story pagoda that were built by Hida no takumi (Hida craftsmen) are designated as national treasures. Horaitai garden (designated as a national place of scenic beauty) is a chisen kaiyushiki horai garden (strolling pond garden with trimmed azaleas) where azaleas reach full bloom from spring to summer. <Koto - East of the Lake>



① National Treasure Hikone Castle

春

Cool spring winds invite you to blossom viewing.

Come and enjoy the memorable "Eight Scenes of Lake Biwa." Visit the historic towns and the old highway. Spring is when the lake water begins to warm again. You can enjoy atmospheric excursions to a water district, and cruise Lake Biwa aboard a pleasure boat.



② Kaizuosaki



③ Boat excursion to the water district in Omihachiman



④ Biwako Cruise



⑤ Nagahama Hikiyama Festival



⑥ Irises at Michi-no-eki Shinasahi Fuusyamura

In spring, flowers reach full bloom along the pleasant waterfront of Shiga. Especially recommended are the cherry blossoms in Kaizuosaki and irises at Shinasahi Fuusyamura.

Flowers blossom around Lake Biwa, creating beautiful scenes in various spots. It's a special experience to feel the refreshing wind from the lake and see these views from a cruising boat. Lake cruising is sure to be a memorable part of your visit to Lake Biwa.

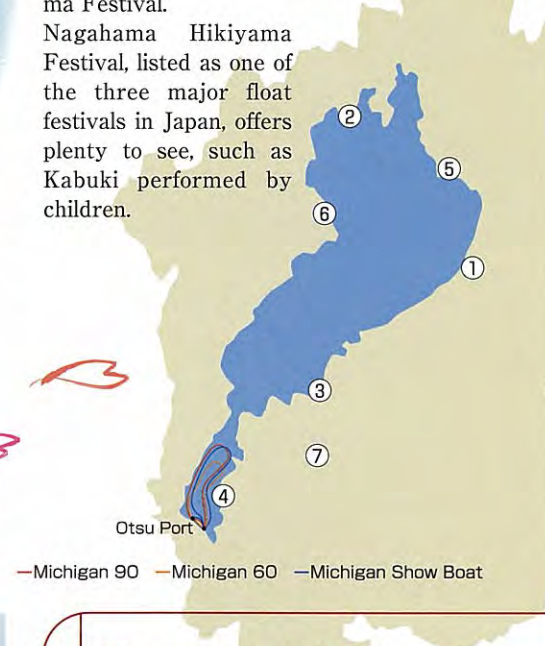
Another recommended waterfront activity is taking a boat excursion to the water district in Omihachiman and Azuchi.

As your rowboat glides down the waterway, you see reed beds and hear the calls of waterfowl. You can also enjoy cherry and field mustard blossoms from your boat.

Also, in Shiga there are numerous golf courses where you can enjoy your game in a relaxed atmosphere.

Spring in Shiga is a perfect time to enjoy outdoor activities with friends and family. Another activity you won't want to miss is the Nagahama Hikiyama Festival.

Nagahama Hikiyama Festival, listed as one of the three major float festivals in Japan, offers plenty to see, such as Kabuki performed by children.



Information on Golf Courses

Major golf courses in Shiga Prefecture

- Koga Country Club
- Seta Golf Course
- Biwako Ohashi Golf Course
- Asamiya Golf Course
- Shigaraki International Country Club
- Shiga Konan Country Club
- Ryuo Golf Club, etc.



⑦ Midori no Hiroba (putter golf course)

夏



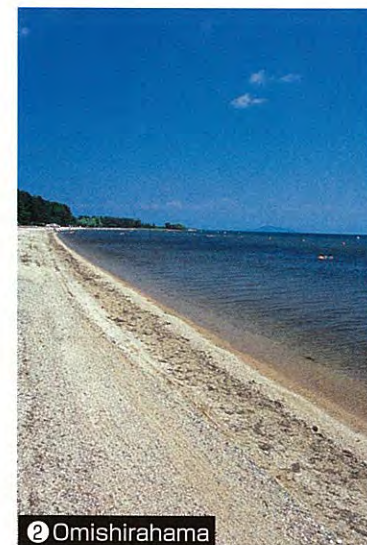
Water sports

Enjoy your holiday on the waterfront surrounded by nature.

Enjoy watersports such as sailing and wind surfing. At night, fireworks light up the night.

Lake Biwa in summer offers a lot to do and see, including nature watching amid the waterfront flowers.

1 Biwako Fireworks



2 Omishirahama



3 Biwako Hana Funsui (fountain)



4 Mt. Ibuki



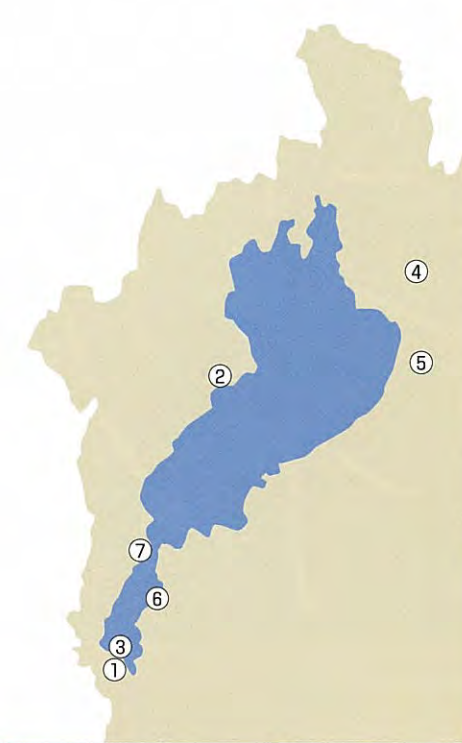
5 Baikamo



6 Lake Biwa Museum



Summer in Shiga offers opportunities for various activities such as swimming in the lake, yacht sailing, sailboarding and kayaking. Complete camping facilities are also available. In addition to watersports, those interested in hiking can enjoy walking among the alpine plants on Mt. Ibuki. Also, for those who seek a romantic nighttime atmosphere at Lake Biwa, there are events that light up the surface of the lake, such as Biwako Hana Funsui (fountain) and Biwako Fireworks. Baikamo underwater flowers in the Jizogawa River, Samegai, are also famous for their rarity. The Lake Biwa Museum is also recommended. The museum offers hands-on exhibitions focusing on the theme "the lake and its people."



Information on Swimming Spots

- Major swimming beach at Lake Biwa
- Manohama Beach ● Imajukuhama Beach
 - Wani-hama Beach ● Horai-hama Beach
 - Matsunoura Beach ● Omi-Maiko Beach
 - Kita-Komatsu Beach ● Miyahama Beach
 - Minamihama Beach ● Shirahigehama Beach Camp Site
 - Haginohama Beach ● Imazu-hama Beach
 - Omi-Shirahama Beach Camp Site
 - Makino Sunny Beach etc.



7 Shirahigehama Beach Camp Site



1 Ishiyamadera Temple

秋

Visit the lake country with its autumn colors.

Autumn is when the mountains surrounding Lake Biwa turn shades of red and yellow.

Visit the lake country to see the colorful leaves, the stone Buddha statues on the east side of the lake, and a festival where you'll share the tradition, culture and history.



2 Hiyoshi Taisha



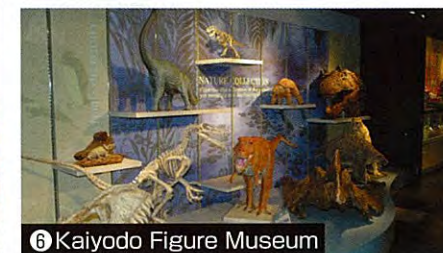
3 Shiga Prefectural Shigaraki Ceramic Cultural Park



4 Otsu Matsuri Festival



5 Omi old merchants' town (Gokasho)



6 Kaiyodo Figure Museum

Autumn is when leaves change color. Saimyoji Temple, Kongorinji Temple and Hyakusaiji Temple in Koto (east side of the lake) are referred to as the Koto Sanzan temples (three mountain temples of the east side of the lake) and are popular spots for autumn foliage viewing in the Kansai area. Enryakuji Temple on Mt. Hiei also is a good place to view the majestic colors of autumn foliage.

If you would like to experience nostalgic townscapes, come and see the historic streets of Gokashokondo town. Here you'll find many historical residences of Omi merchants featuring funaitakabe (walls made from old ship timber), along with whitewashed storehouses.

Another yearly pleasure is the Autumn Festival. One of the three major festivals in Shiga, the Otsu Festival has been held since the Edo period. Thirteen floats parade during the festival of Tenson Shrine, and together they're a grand sight.

As a tour feeling about Japanese art, you can visit the Shigaraki Ceramic Cultural Park where Shigaraki ware and ceramic ware from all over the world are on exhibit, and Kaiyodo Figure Museum where figure statues were first exhibited in the dioramas in Japan.



Information on spots for autumn viewing

- Major spots for autumn viewing in Shiga Prefecture
- Hiyoshi Taisha ● Saikyo-ji ● Miidera Temple
 - Ishiyamadera Temple ● Eigen-ji
 - Saimyoji Temple ● Kongorinji-Temple
 - Hyakusaiji Temple ● IHeizan Enryakuji
 - Oku Biwako Parkway ● Kutsuki Gorge, etc.



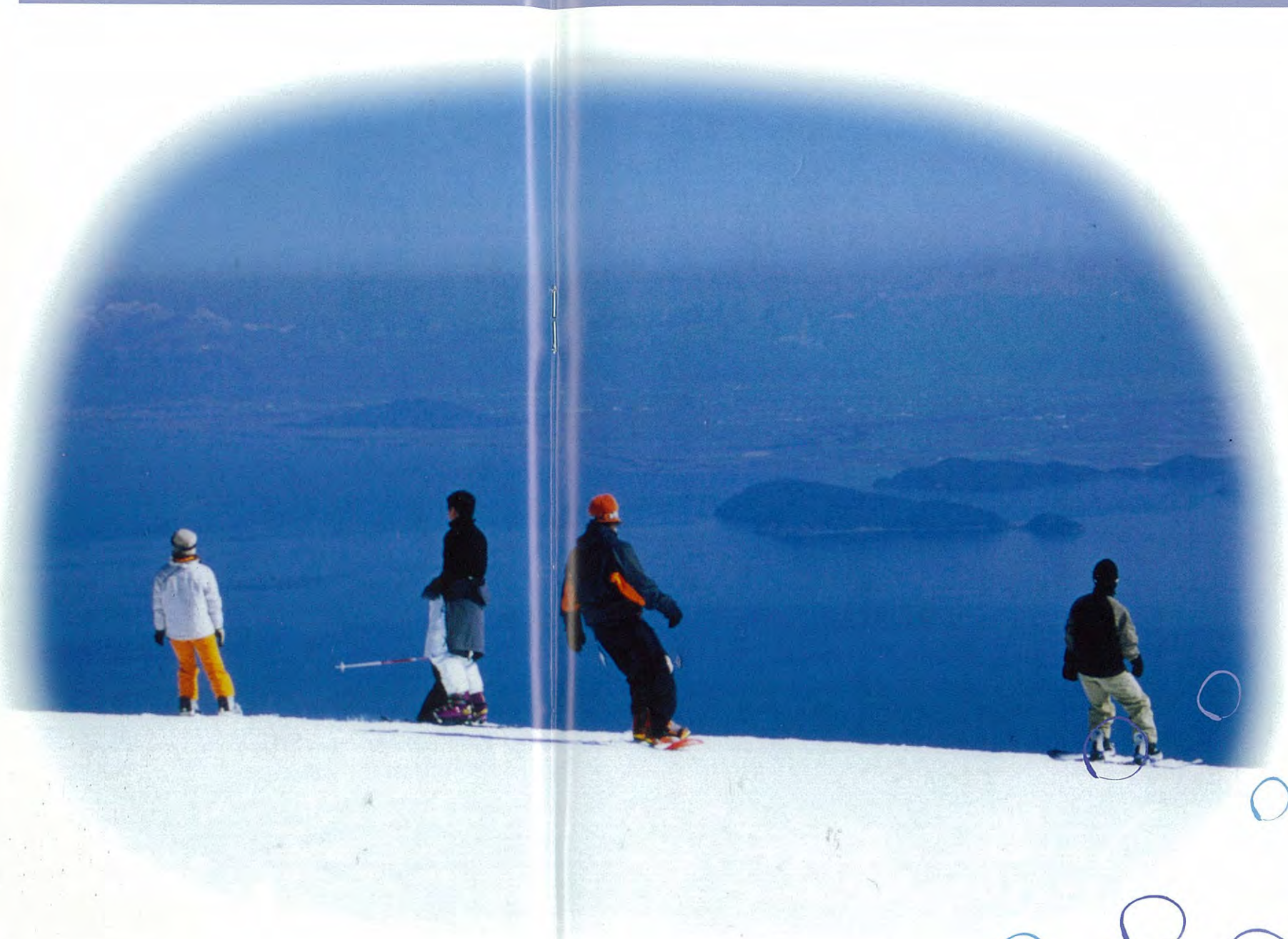
7 Eigen-ji Temple



① Waterfowl in Takashima, Kohoku area (north of the lake)

The arrival of waterfowl on the north and west sides of Lake Biwa means winter has returned.

Warm your body, and your soul, with hot duck pot and hot spring baths. Snowy ski resorts and the Bonbai exhibition of well-tended bonsai plum trees with pink blossoms . . . the lake country quietly awaits the spring.



② Biwako Valley



③ Ogoto Hot Springs



④ Nagahama Bonbai Exhibition

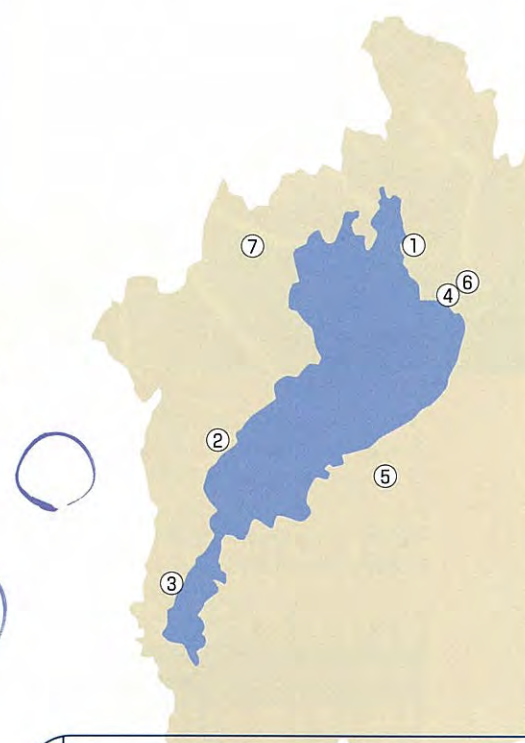


⑤ Tarobougu Ohitaki Taisai (fire festival)



⑥ Nagahama Castle

In winter, Shiga offers quiet, atmospheric scenes. Nagahama Castle, standing in its monochrome world, and the waterfowl of Kohoku and Kosei areas herald winter's arrival like scenes from ink paintings. For those who want winter fun in Shiga, we recommend skiing. In Shiga, you can easily access and enjoy numerous ski resorts. After skiing you can soak your exhausted body in one of the many high-quality hot springs along the shores of Lake Biwa. There are other great winter events such as a Bonbai exhibition, where a 400-year-old tree is exhibited, and "Tarobougu Ohitaki Taisai," where gomagi (wood sticks) dedicated from all over Japan are burned in holy fire to wish for the well-being of families and sound health.

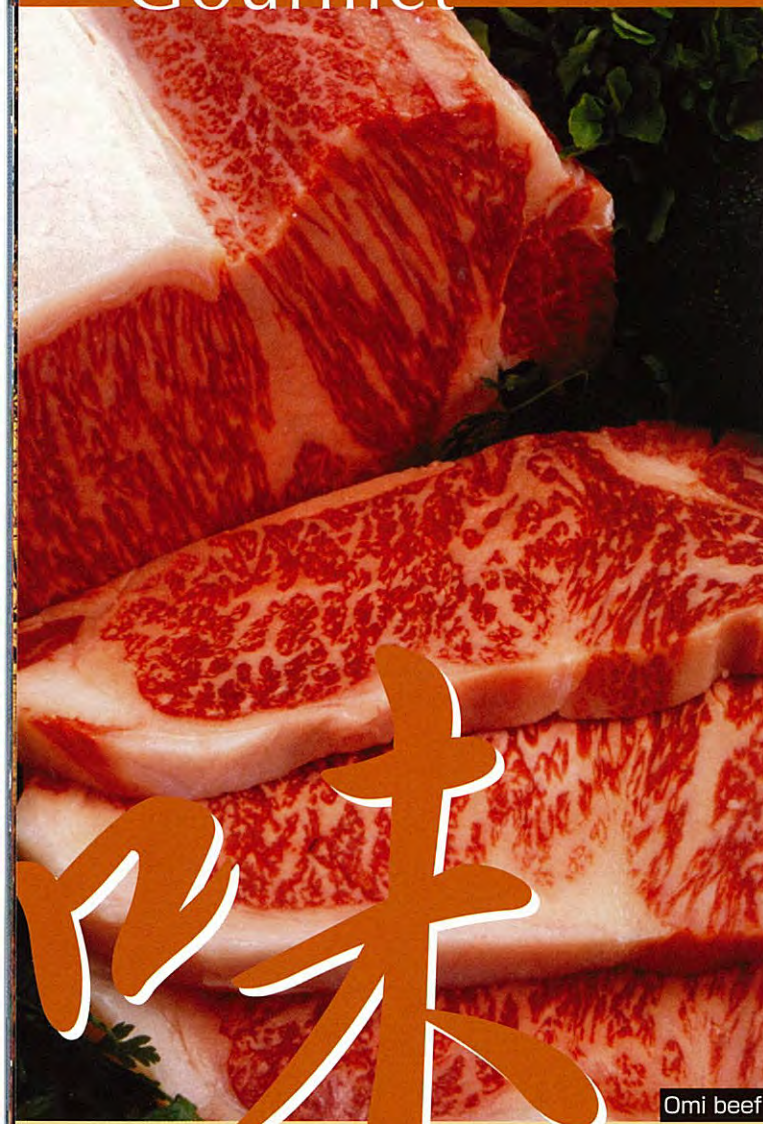


Information on Ski Resorts

- Major ski resorts in Shiga Prefecture
- Biwako Valley ● Piste Japon Ibuki Ski Area ● Akagoyama Ski Area
 - Yogo Kogen Resort Yap ● Kutsuki Snow Park ● Hakodateyama ● Makino Ski Area ● Kunizakai Ski Area, etc.



⑦ Makino Ski Area

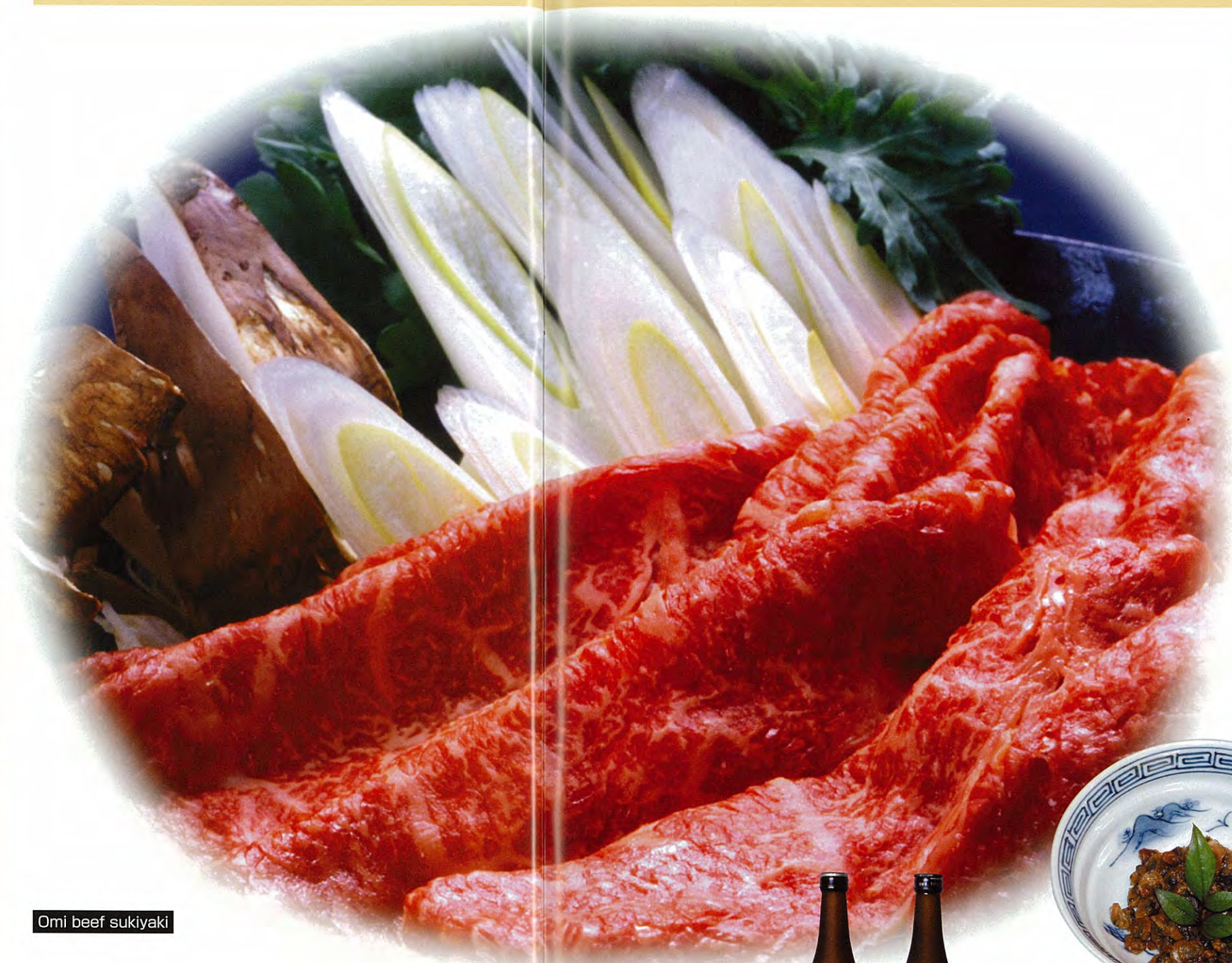


Omi beef

味

Savor the food of the lake country with plenty of local ingredients.

Surrounded by nature, Shiga offers an abundance of fresh foods such as fish from Lake Biwa, Omi beef, ducks and buckwheat noodles. Surrounded by nature, Shiga offers plenty of fresh food such as fish from Lake Biwa, Omi beef, duck and buckwheat noodles. Enjoy the variety of foods and cooking styles found in the lake country.



Omi beef sukiyaki

Funazushi (sushi with pickled crucian carp) is a representative food of Shiga Prefecture.

Funazushi is the oldest sushi in Japan. It is made by fermenting crucian carp and rice grown in Omi to create a very unique flavor. It is one of the traditional foods of Shiga and is renowned throughout the country.

Additionally, you won't want to miss the rich selection of freshwater fish from Lake Biwa. The lake fish is processed as tsukudani (food cooked in soy sauce) and makes an ideal souvenir.



Seed sweetfish nanbanzuke (marinated with vinegar)

Omi beef is listed as one of the three major Japanese beef brands (Matsuzaka, Kobe and Omi). The Omi cattle along with Tanba cattle were brought to Japan as work animals on farms during the Edo period. Omi beef is tender and suitable for shabu-shabu and sukiyaki, as well as for beefsteak.

Shiga offers delicious food throughout the year, especially in winter, when we recommend the duck cuisine served at traditional Japanese inns (ryokan) in the Kohoku (northside of the lake) area. Kamo sukiyaki, prepared with naturally grown duck, is exquisite.

Shiga is a treasure house of exquisite foods provided by nature.

Freshwater clam shigureni (flavored with soy sauce and ginger)



Lake fish cuisine



Duck pot



Locally-brewed sake



Funazushi (sushi with pickled crucian carp)

Information on Souvenirs

- Popular souvenirs from Shiga Prefecture
- Takashima senkotsu (fan ribs for Japanese fans)
 - Shigaraki ware
 - Japanese candle
 - Tochi-mochi (rice cake with Japanese horse chestnut)
 - Ibuki soba (buckwheat noodle)
 - Fuyugaki (Fuyu persimmon)
 - Jizake (locally-brewed sake)
 - Funazushi (sushi with pickled crucian carp)
 - Tsukudani (soy flavored fish/clam)
 - Akakon-nyaku (a colored konjac food)
 - Crafted glass
 - Pickled hinona radish
 - Omi beef
 - Unpei-fude (writing brush)



Shiga Prefecture Tourist & Product Information Center



Information on Facilities and Accommodations

Ski Resort

Area	Name of Ski Resort	Number of lifts	Number of slopes
Konan (South of the Lake)	Biwako Valley	7	9
Kohoku (North of the Lake)	Berg Yogo	4	5
Kohoku (North of the Lake)	Yogo Kogen Resort Yap	4	5
Kohoku (North of the Lake)	Akagoyama Ski Area	1	1
Kohoku (North of the Lake)	Piste Japon Ibuki Ski Area (Mt. Ibuki Sky Area)	4	5
Kohoku (North of the Lake)	Oku Ibuki Ski Area	7	11
Kosei (West of the Lake)	Kunizakai Ski Area	5	4
Kosei (West of the Lake)	Makino Ski Area	2	5
Kosei (West of the Lake)	Hakodateyama Ski Area	14	5
Kosei (West of the Lake)	Kutsuki Snow Park	3	4

Hot Spring & Bath Facility

Area	Name of Hot Spring
Konan (South of the Lake)	HIRATOPIA Onsen, OGOTO-Onsen, BIWAKO Onsen
Konan (South of the Lake)	ISHIYAMA Onsen, NANGO Onsen, New Biwako Kenko Summerland
Konan (South of the Lake)	JUNIBO Onsen Yurara, KAMOSHIKA Onsen, YAPPONPON-NO-YU
Konan (South of the Lake)	KAFUKANOYU, SHIONO Onsen, NIYANO Onsen
Konan (South of the Lake)	SHIGARAKI Onsen, TARAONOUYU, OGAWATEI
Koto (East of the Lake)	SENNOMATUBARA Onsen, OHMI Onsen, Miyagahamanoyu, Gamounonoyu
Kohoku (North of the Lake)	NAGAHAMATAIKO Onsen, JOYIBUKI
Kohoku (North of the Lake)	SUGATANI Onsen, ONOE Onsen, KITAOHMINOYU
Kohoku (North of the Lake)	KOKOHAN Onsen, Shizugatake Komyosekinoyu, Okubiwako Tennenseki Onsen, Experience & Exchange Institution Ranta
Kosei (West of the Lake)	TAKARABUNE Onsen, KUTSUKI Onsen TENKU
Kosei (West of the Lake)	SHIRATANI Onsen, MAKINO Kogen Onsen SARASA



Golf Course

Area	Name of Golf Course	Hole	Par
Konan (South of the Lake)	Koga Country Club	18	72
Konan (South of the Lake)	Seta Golf Course	54	216
Konan (South of the Lake)	Biwako Ohashi Golf Course	27	103
Konan (South of the Lake)	Asamiya Golf Course	18	72
Koto (East of the Lake)	Ryuo Golf Club	18	72



Hotel/Ryokan (Japanese style inn)

Area	Facility Name	Number of guest rooms	Capacity
Konan (South of the Lake)	Biwako Hotel	171	486
Konan (South of the Lake)	Biwako KOYO Hotel	102	560
Konan (South of the Lake)	Ayaha Lakeside Hotel	29	180
Konan (South of the Lake)	Otsu Prince Hotel	540	1140
Konan (South of the Lake)	Hotel Blue Lake Otsu	95	130
Konan (South of the Lake)	Biwako Hanakaido	43	173
Konan (South of the Lake)	Dantoukan Kikunoya	30	180
Konan (South of the Lake)	Yumotokan	75	400
Konan (South of the Lake)	Satoyu Mukashi Banashi Yuzanso	115	603
Konan (South of the Lake)	Biwako Grand Hotel KyoOmi	198	1150
Konan (South of the Lake)	Royal Oak Hotel Spa & Gardens	169	354
Konan (South of the Lake)	Resort Hotel Laforet Biwako	273	893
Konan (South of the Lake)	Shiono-Onsen	9	40
Konan (South of the Lake)	Hotel Boston Plaza Kusatsu	122	170
Konan (South of the Lake)	Hotel Daisho Kusatsu	73	93
Koto (East of the Lake)	Best inn Ohmihachiman	116	222

Biwako Hakkei

(The Eight Scenic Views of Lake Biwa)

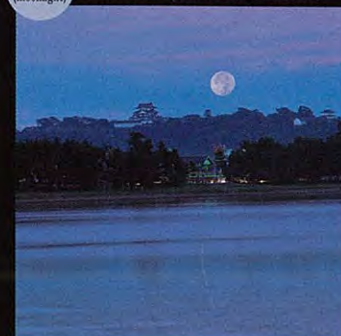
Shimayoku (deep green) Subtle reflection of Chikubu Island



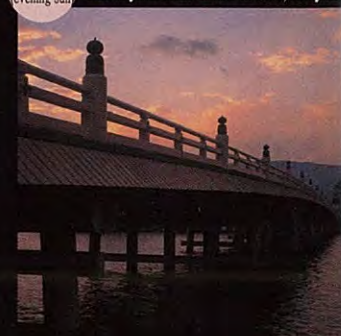
Shunsyoku (color of spring) A water district in Azuchi-Hachiman



Getsumei (moonlight) The old castle in Hikone



Sekiyo (evening sun) The crystal-clear water in Seta, Ishiyama



Ryofu (cool wind) The white beach of Omatsuzaki



Gyomu (morning mist) The granite cliffs at Kaizuosaki



En-u (misty rain) Forest of Mt. Hiei

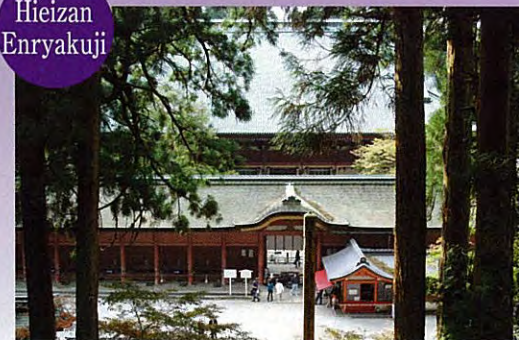


Shinsetsu (fresh snow) The grandeur of Mt. Shizugatake



World Cultural Heritage

Hieizan Enryakuji



The head temple of Tendai Buddhist sect, designated as a World Cultural Heritage site. It consists of three areas, Toto (east tower), Saito (west tower), and Yokokawa, which were founded by Saicho.

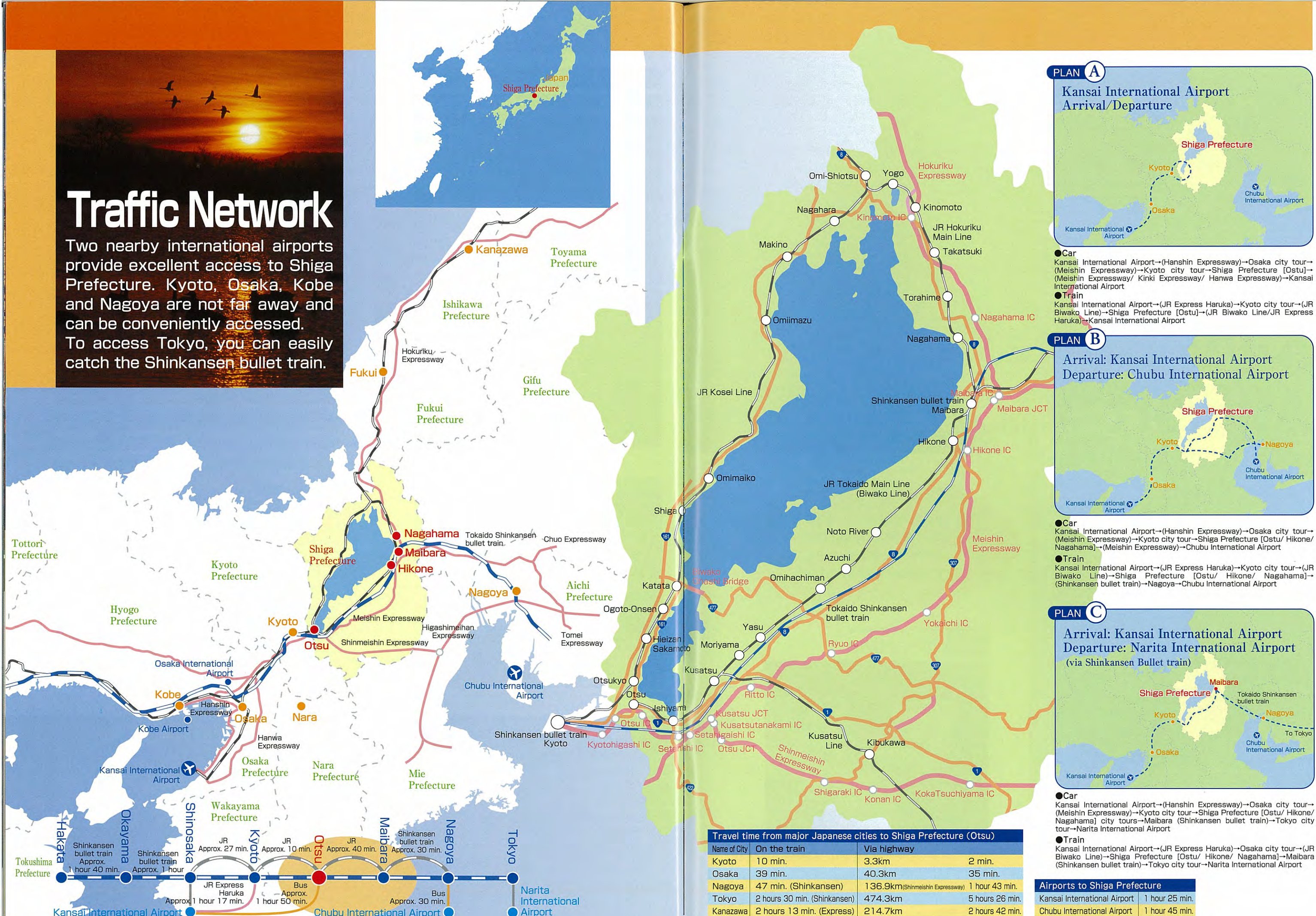
National Treasure Hikone Castle



An excellent castle of the Ii clan, which held 350 thousand goku (indicator of rice production), it is listed as one of the Great Four National Treasure Castles. Highlights of the visit to Hikone Castle are the castle keep (National Treasure) and towers (Important Cultural Properties).

Traffic Network

Two nearby international airports provide excellent access to Shiga Prefecture. Kyoto, Osaka, Kobe and Nagoya are not far away and can be conveniently accessed. To access Tokyo, you can easily catch the Shinkansen bullet train.



Travel time from major Japanese cities to Shiga Prefecture (Otsu)

Name of City	On the train	Via highway
Kyoto	10 min.	3.3km
Osaka	39 min.	40.3km
Nagoya	47 min. (Shinkansen)	136.9km (Shinmeishin Expressway)
Tokyo	2 hours 30 min. (Shinkansen)	474.3km
Kanazawa	2 hours 13 min. (Express)	214.7km

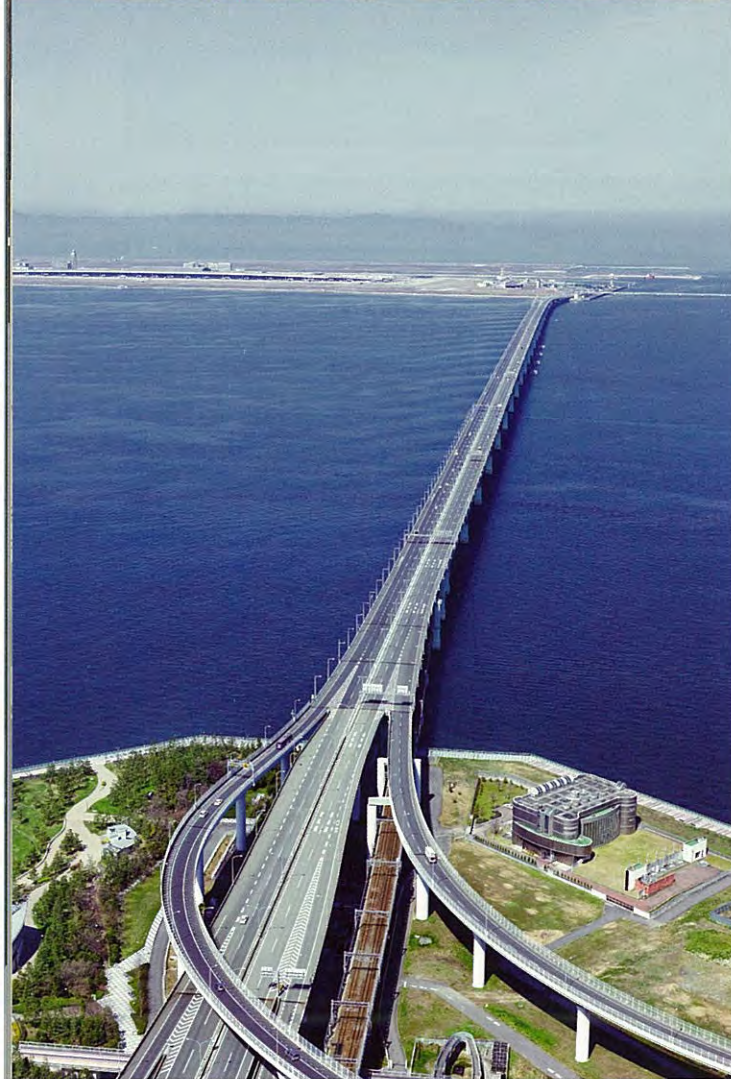
Airports to Shiga Prefecture

Kansai International Airport	1 hour 25 min.
Chubu International Airport	1 hour 45 min.



Kansai International Airport

The Gateway to Shiga and Kansai



The international arrivals area on the first floor has everything you need for a successful stay!



Coin-Operated Internet
@Station
 An internet kiosk with multiple language settings so you can gather information for your travels.
[Available languages]
 Japanese, English, Korean, Chinese
[Fee]
 ¥100/10min.

TOURIST INFORMATION CENTER

간사이 관광정보센터 关西观光信息中心



Kansai Tourist Information Center

— Helping to Make Your Journey More Enjoyable —

The Kansai Tourist Information Center provides maps and pamphlets on the Kansai region free of charge. It also provides information on tourist attractions and locations, traditional events and festivals, theatrical performances, food, shopping, accommodations and more.

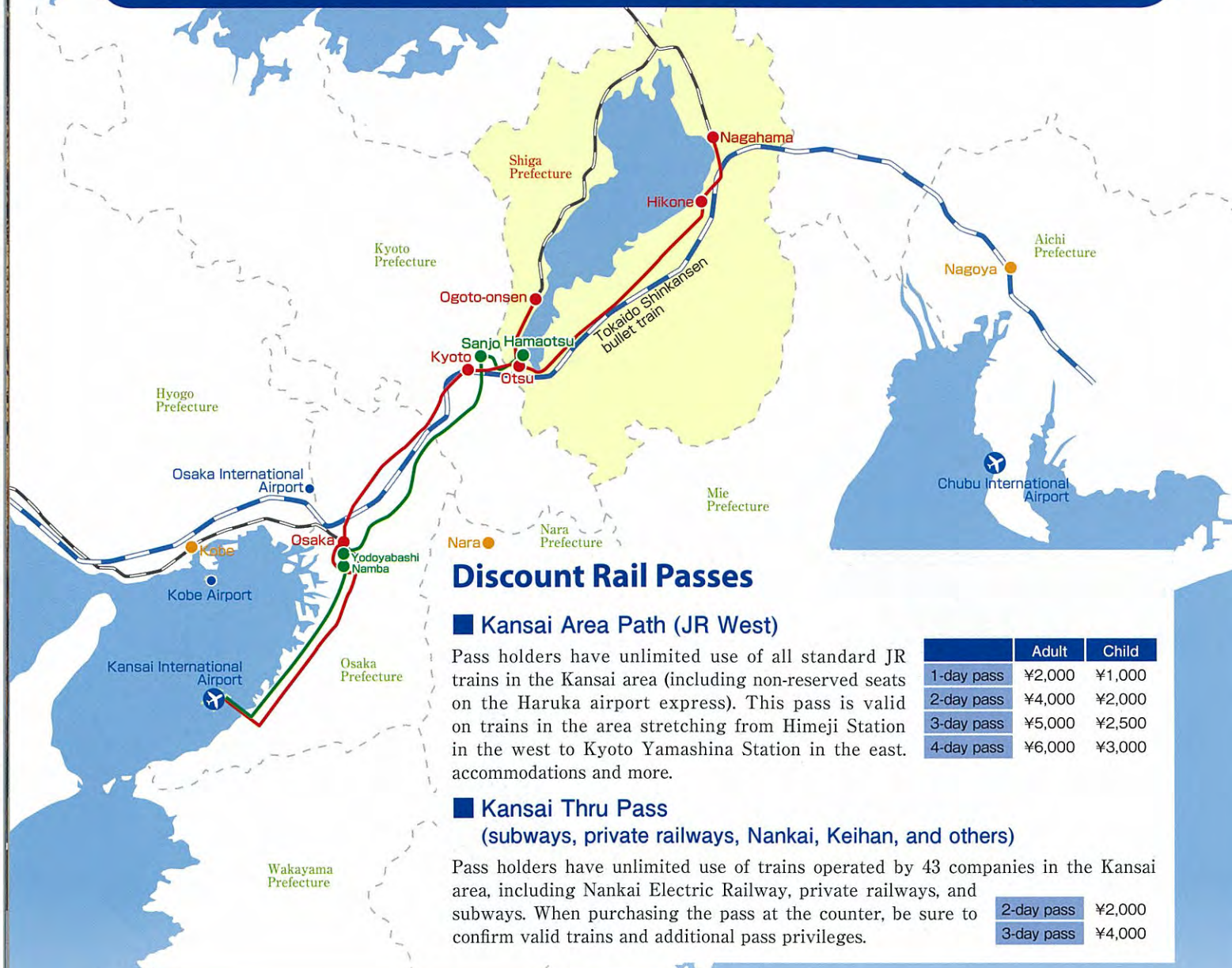


Travel Desk IF Center

Hotel reservations and public transportation tickets
 The Travel Desk sells reservations for hotels nationwide and tickets for various modes of public transit (Nankai, Kintetsu, Airport Limousine Bus, express bus, high-speed ferry, etc.).



Access from Kansai International Airport



Discount Rail Passes

Kansai Area Path (JR West)

Pass holders have unlimited use of all standard JR trains in the Kansai area (including non-reserved seats on the Haruka airport express). This pass is valid on trains in the area stretching from Himeji Station in the west to Kyoto Yamashina Station in the east, accommodations and more.

	Adult	Child
1-day pass	¥2,000	¥1,000
2-day pass	¥4,000	¥2,000
3-day pass	¥5,000	¥2,500
4-day pass	¥6,000	¥3,000

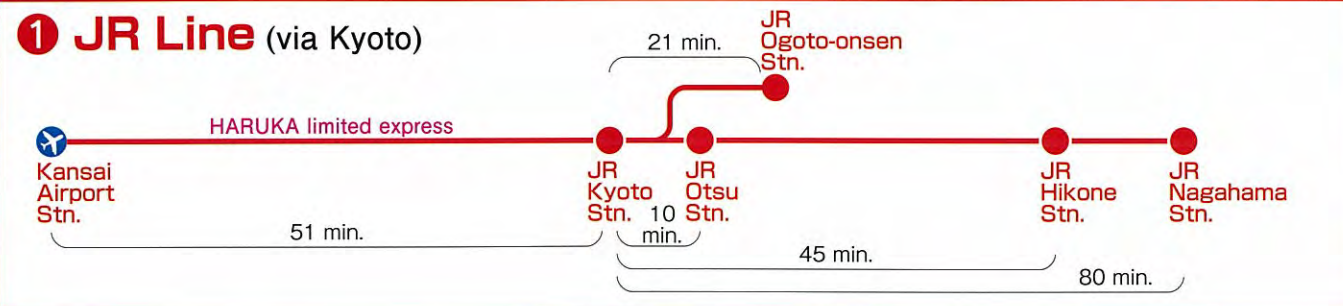
Kansai Thru Pass

(subways, private railways, Nankai, Keihan, and others)

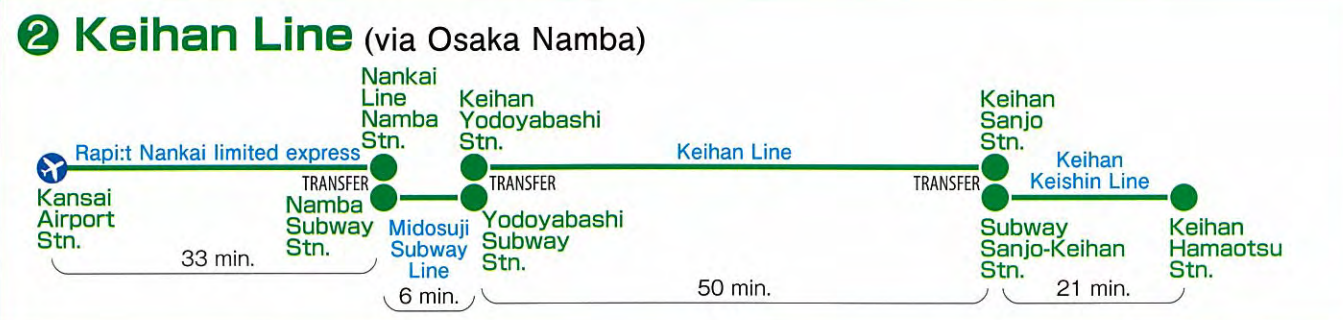
Pass holders have unlimited use of trains operated by 43 companies in the Kansai area, including Nankai Electric Railway, private railways, and subways. When purchasing the pass at the counter, be sure to confirm valid trains and additional pass privileges.

2-day pass	¥2,000
3-day pass	¥4,000

1 JR Line (via Kyoto)



2 Keihan Line (via Osaka Namba)



Before heading home, benefit from duty-free shopping — Kansai International Airport



DUTY FREE SHOP KANSAI AIRPORT

Passenger Terminal Building, International Gate Area 3F Center, South End

The largest duty-free shop in the airport, offering a full selection of luxurious products (fragrances, cosmetics, liquor, cigarettes, and more).

Passenger Terminal Building, International Gate Area 3F Center, North End

Alongside fragrances and cosmetics, this store features a watch boutique offering all of the world's top watch brands.



Yorozu

This general store for souvenir gifts has everything from food to knickknacks, as well as the largest selection of electronics in the international arrivals area.

Segami Pharmacy

Carries pharmaceutical products and travel goods that are essential when spending in Japan. Here you'll easily find supplements, cosmetics, and other products that are currently the hot topic in Japan.



Miyabi

Choose from the best Japanese souvenirs selected by Kansai International Airport. Get a taste of Japan with the store's traditional but modern interior.





The four seasons of Japan
Japan's largest lake

Journey to Shiga



Tourist information center

Biwako Visitors Bureau

TEL.+81-77-511-1535 FAX.+81-77-526-4393

Shiga Prefecture Tourism Promotion Division

TEL.+81-77-528-3741 FAX.+81-77-528-4870

Shiga Prefecture Tourist & Product Information Center

TEL.+81-77-521-4288 FAX.+81-77-521-4288

Shiga Prefecture Tourist & Product Information Center (Tokyo)

TEL.+81-3-5220-0231 FAX.+81-3-3211-4689

<http://en.biwako-visitors.jp/>