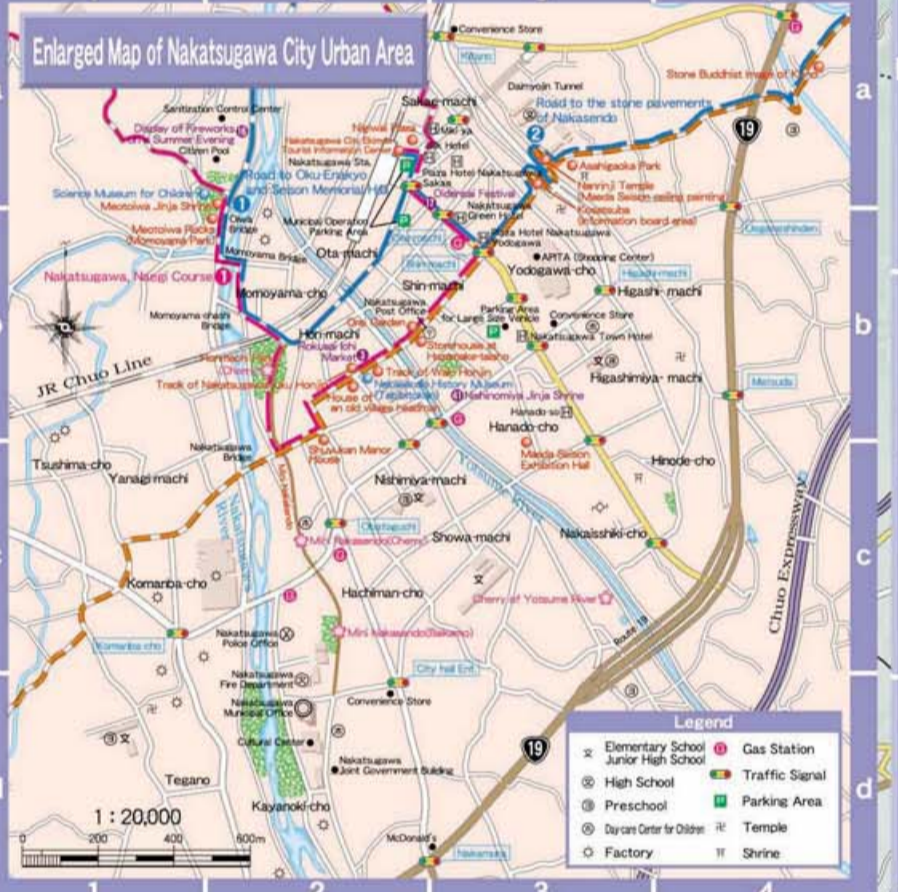
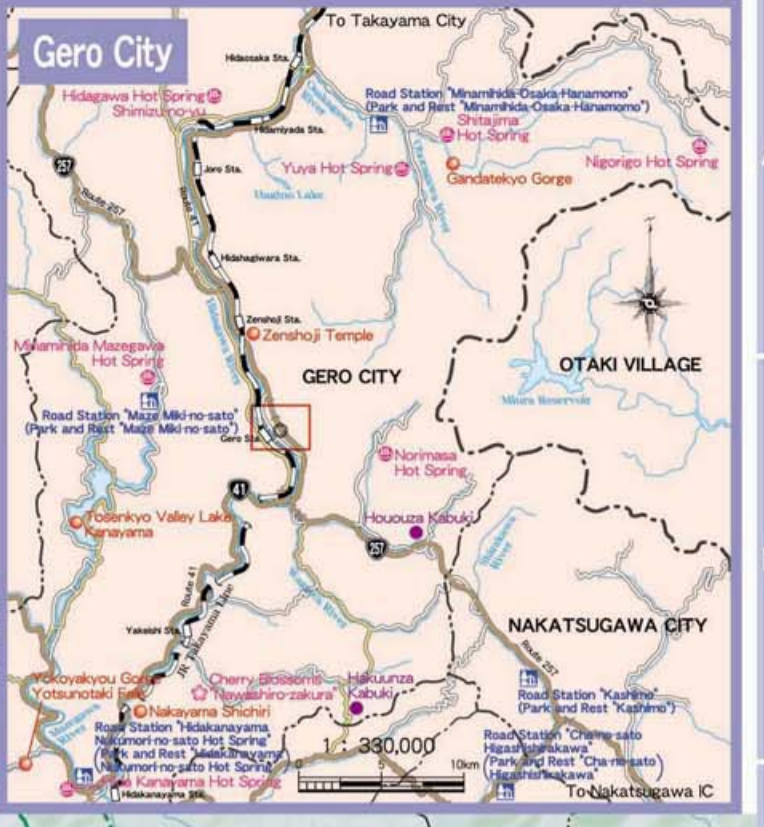
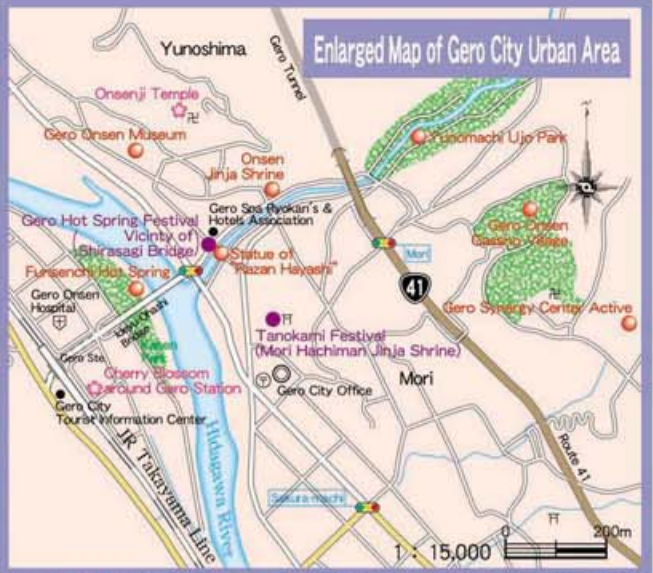
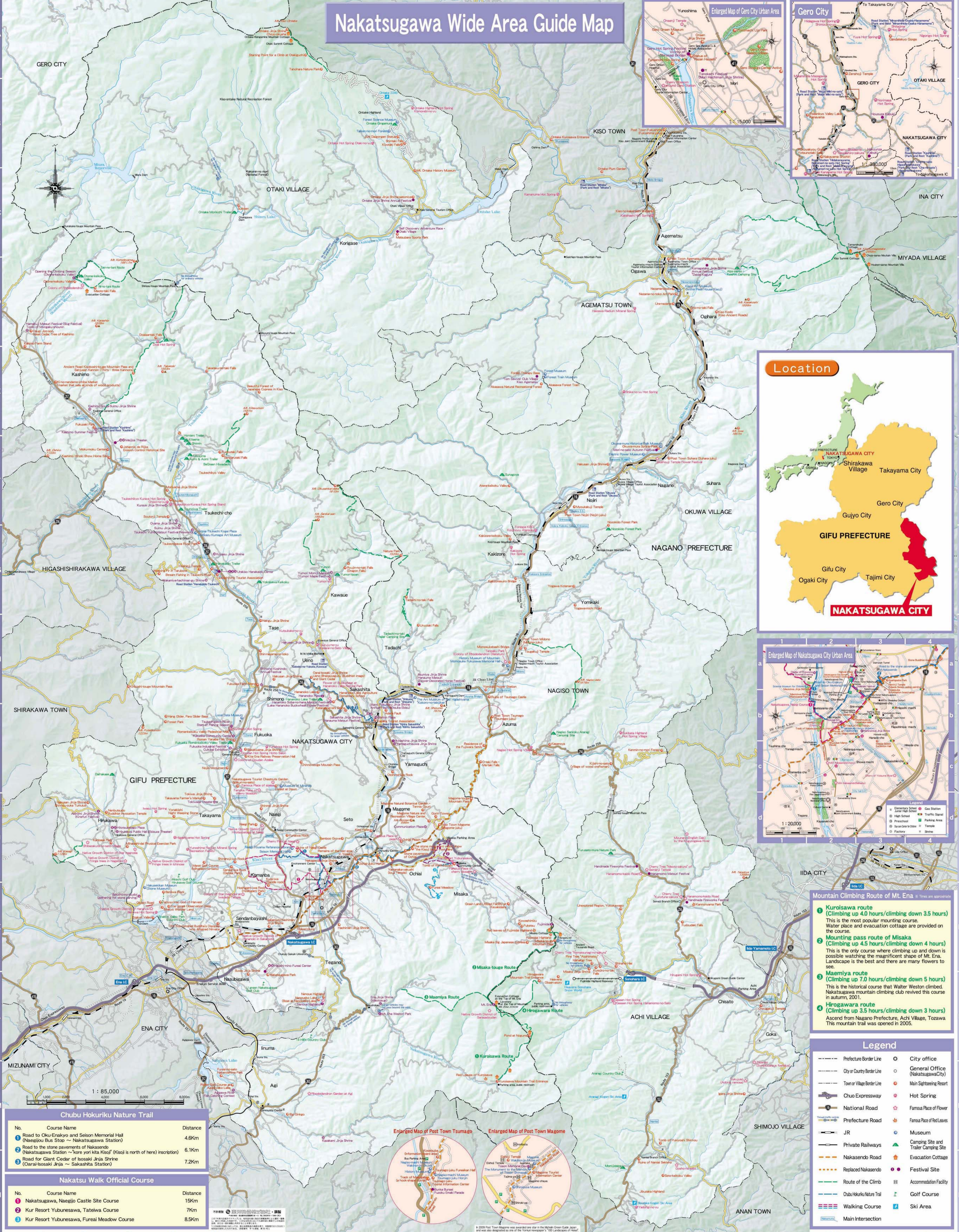




# Nakatsugawa Wide Area Guide Map



- ### Mountain Climbing Route of Mt. Ena
- 1 **Kuroisawa route** (Climbing up 4.0 hours/climbing down 3.5 hours)  
This is the most popular mountain course. Water place and evacuation cottage are provided on the course.
  - 2 **Mounting pass route of Misaka** (Climbing up 4.5 hours/climbing down 4 hours)  
This is the only course where climbing up and down is possible watching the magnificent shape of Mt. Ena. Landscape is the best and there are many flowers to see.
  - 3 **Maemiya route** (Climbing up 7.0 hours/climbing down 5 hours)  
This is the historical course that Water Western climbed. Nakatsugawa mountain climbing club revived this course in autumn, 2001.
  - 4 **Hiragawara route** (Climbing up 3.5 hours/climbing down 3 hours)  
Ascend from Nagano Prefecture, Achi Village, Tozawa. This mountain trail was opened in 2005.

- ### Legend
- Prefecture Border Line
  - City or Country Border Line
  - Town or Village Border Line
  - Chuo Expressway
  - National Road
  - Prefecture Road
  - Private Railways
  - Nakasendo Road
  - Replaced Nakasendo
  - Route of the Climb
  - Chubu-Hokuriku Trail
  - Walking Course
  - Main Intersection
  - City office
  - General Office (Nakatsugawa City)
  - Main Sightseeing Resort
  - Hot Spring
  - Famous Place of Flower
  - Famous Place of Red Leaves
  - Museum
  - Camping Site and Trailer Camping Site
  - Evacuation Cottage
  - Festival Site
  - Accommodation Facility
  - Golf Course
  - Ski Area

### Chubu Hokuriku Nature Trail

No.	Course Name	Distance
1	Road to Oku-Enakyo and Seison Memorial Hall (Naegi Bus Stop ~ Nakatsugawa Station)	4.6Km
2	Road to the stone pavements of Nakasendo (Nakatsugawa Station ~ Kore yori Iida Kiosh) (Kisoji is north of here) inscription)	6.1Km
3	Road for Giant Cedar of Isozaki Jinja Shrine (Oarai-Isozaki Jinja ~ Sakashita Station)	7.2Km

### Nakatsuta Walk Official Course

No.	Course Name	Distance
1	Nakatsugawa, Naegi Castle Site Course	16Km
2	Kur Resort Yubunesawa, Tatehira Course	7Km
3	Kur Resort Yubunesawa, Fureai Meadow Course	8.5Km

