

Pottery Footpath

英語版

A Course 1.6km/60min.

Let's walk around with an Information sign

measure of distance (m)

The starting point of the Pottery Footpath

Meitetsu-line: Tokoname Station



Tojiki Kaikan nishi 2.9

You can meet many cat sculptures here.

A huge cat invites you.

Tojiki Kaikan mae 9.5 • Tokoname I.C. →

Tokoname Ceramic Hall
(Tokoname Tojiki Kaikan)
陶磁器会館



Ceramic mural made by elementary school children.

Ceramic pipes are used to support the banks or the basis of a house.

This bridge was built first on a hill about 90 years ago, and the lower part of the bridge was dug afterwards, and the lower road was completed.

Fence of pipes for electric cable.

There is an old tunnel under bank support.

Here you can see ceramic pipes with the IS mark that Ina Seito (existing INAX) produced.

The scenery of the chimney from here is the best.

A steep slope

When this chimney was built, the height was 24m. It was the biggest chimney in Tokoname.

Here is a large water lily bowl made by the coil building method

A stone wall by "Izu-ishi" of the shipping agent. These piled up stones were carried by a return ship that carried pots or bottles to Edo from Izu.

Anti sulfuric acid bottles are used to support the banks.

Dokan-zaka Hill
土管坂

Let's look at the town of Tokoname from this point.

There are a lot of shops in this street. Let's do wonderful shopping.

Shochu (Japanese liquor) bottles are used to support the banks.

Ceramic pipes for railroads are used for the foundations of a house.

This path is covered with the bases that were used when ceramic pipes were fired.

A square down-draft kiln with both sides fire mouths.

Noborigama
(Climbing Kiln)
登窯

It is only here in Japan that chimneys of 10 form a line.

Many black wooden walled old factories are lined along this slope.

Kiln bricks are support banks.

Go off the route: There are kilns and workshops.

Altitude (m)

Here you can see a pair of ceramic guardian dogs.

The shopping street with ceramic sculptures. This road leads to INAX Museums.

Explanatory note

- Railway station
- Bus stop
- Taxi
- Public toilet
- Accessible facility
- Tourist Information
- Coin lockers
- Parking
- Chimney
- Kiln
- Information sign

The Takita Family
(Old shipping dealer)
廻船問屋 瀧田家



Please come during open hours.

Only Sat., Sun. & holidays

westgate

Passing gate

Denden-zaka Hill

8

13.0

9

10

11

12

13

14

15

16

17

18

19

20

21

22

23

24

25

26

27

28

29

30

31

32

33

34

35

36

37

38

39

40

41

42

43

44

45

46

47

48

49

50

51

52

53

54

55

56

57

58

59

60

61

62

63

64

65

66

67

68

69

70

71

72

73

74

75

76

77

78

79

80

81

82

83

84

85

86

87

88

89

90

91

92

93

94

95

96

97

98

99

100

101

102

103

104

105

106

107

108

109

110

111

112

113

114

115

116

117

118

119

120

121

122

123

124

125

126

127

128

129

130

131

132

133

134

135

136

137

138

139

140

141

142

143

144

145

146

147

148

149

150

151

152

153

154

155

156

157

158

159

160

161

162

163

164

165

166

167

168

169

170

171

172

173

174

175

176

177

178

179

180

181

182

183

184

185

186

187

188

189

190

191

192

193

194

195

196

197

198

199

200

201

202

203

204

205

206

207

208

209

210

211

212

213

214

215

216

217

218

219

220

221

222

223

224

225

226

227

228

229

230

231

232

233

234

235

236

237

238

239

240

241

242



Pottery Footpath

やきもの散歩道

A course

Welcome to the Pottery Footpath!
This is an introduction of the recommended points by "the Tokoname Guide Group".

Let's mind our manners, and enjoy our walk!

About 300 household inhabitants live in this district. The brick chimneys, factories and retaining walls of the ceramics are private property. Please mind your manners, and please take a walk respectfully.

Please smoke in the smoking area.

Don't throw away trash.

Don't look inside private houses and don't enter the sites.

Dokan-zaka Hill 9

One of Japan's top thirty Home Town Hillside Ways



The big ceramic pipe on the left was fired by wood fired kiln in about 1877. The line of the wood mold is seen. The liquor bottle on the right side was fired by a coal kiln in Showa 30's(1955-1965), and bottles which were glazed inside were delivered to the brewing company. On the road surface, clay rings once used about 1960 for firing ceramic pipes are buried.

A square down-draft kiln with both sides fire mouths 12



The kiln progressed from a Anagama kiln (the late Heian era) to a large kiln (the Muro-machi era), then to a climbing kiln (the Edo era). The square kiln was constructed first in Tokoname in Japan in 1901.Visitors can observe the square kiln in Noborigama-Square, Exhibition Space & Studio.

Noborigama (Climbing Kiln) 13

National Important Folk Cultural Property



This kiln was built in 1887. This kiln was built using the slanted ground angle of 17 degrees inclination. A large size ceramic pipe fired in the Taisho era was used for the north side bank. The chimney of both ends is high, and a central chimney is low, and ten chimneys form a line like the letter "U". This was because it was thought that the burnt gas flowed through the eight firing chambers uniformly.

Tokoname Ceramic Hall (Tokoname Tojiki Kaikan) 1



This building is the starting / arrival point of the Pottery Footpath. This building is the ceramic ware information center of Tokoname. The exhibition sale place of the Tokoname ceramic ware is on the first floor. Because all articles here are consignment sales of a ceramist and the ceramics manufacturer, the price is reasonable.

The Takita Family 8

Municipal Cultural Property



The Takita family ran the shipping trade business from the late Edo era to the Meiji era. The current building was restored to the original state in 2000. This building is a museum of the history of the house of a rich merchant of the late Edo era. Admission fee required.(there is a free rest space)

Ceramic wares to see on the Pottery Footpath

The clay of Tokoname sinters at low temperature. A lot of daily necessities for everyday life was produced from old days. Bank supports or the walls seen here are the wisdom of living in Tokoname that reused things which did not become products.

Shochu (Japanese liquor) bottles
A bottle having a screw in the mouth in similar form is an anti sulfuric acid bottle.

Sagger
A container for firing ceramics such as the red clay or glazed wares.

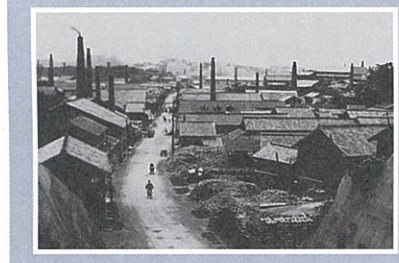
Pipes for electric cable
A ceramic pipe to install an electric cable underground. It is produced today.

Clay ring
The thing which is used when products are piled up in a kiln.

Ceramic pipes
The socket type of the joint was invented in Tokoname at the beginning of the Meiji era.

Danma (kiln brick)
The brick used for closing the entrance when a kiln is fired.

An early industrial peak day of Tokoname



Over 300 to 400 brick chimneys existed in Tokoname at the early industrial peak of Tokoname. The sparrows of Tokoname were said to be black with smoke. Children of Tokoname that went to the neighboring towns saw sparrows which were not black and seem to have been surprised.



Scenery with brick chimneys
There is scenery symbolizing "Tokoname" on the south side of Ichiki-bashi Bridge from 22 to 23 of the information sign.

INFORMATION	
Tokoname Ceramic Hall ☎ 9:00~17:00 ☎ 0569-35-2033 ⑤ Open throughout the year (except for during the Year-end and New Year holidays)	B INAX Museums ☎ Adults ¥600 / Senior high school students or college students ¥400 / Elementary school pupils or Junior high school students ¥200 / Seniors over 70 ¥500 / Handicapped no admission charge ☎ 10:00~18:00 ☎ 0569-34-8282 ⑤ 3rd Wednesday(in case of National holiday, next day) · The Year-end and New Year holidays
The Takita Family ☎ ¥300 / Junior high school students and under no admission charge ☎ 9:30~16:30 ☎ 0569-36-2031 ⑤ Monday (in case of National holiday, next day) · The Year-end and New Year holidays	C Tokoname City Folklore Museum ☎ Admission free ☎ 9:00~16:30 ☎ 0569-34-5290 ⑤ Monday / 4th Tuesday (in case of National holiday, next day) · The Year-end and New Year holidays
Noborigama-Square, Exhibition Space & Studio ☎ Admission free ☎ 9:30~16:30 ☎ 0569-35-0292 ⑤ Monday(in case of National holiday, next day) · The Year-end and New Year holidays	D Tokoname Ceramic Art Institute ☎ Admission free ☎ 9:00~16:30 ☎ 0569-35-3970 ⑤ Monday / 4th Tuesday (in case of National holiday, next day) · The Year-end and New Year holidays
A Tokoname Tourist Information ☎ 9:00~17:30 ☎ 0569-34-8888 ⑤ Open throughout the year (except for during the Year-end and New Year holidays)	☎ Admission fee ☎ Open ⑤ Closed

