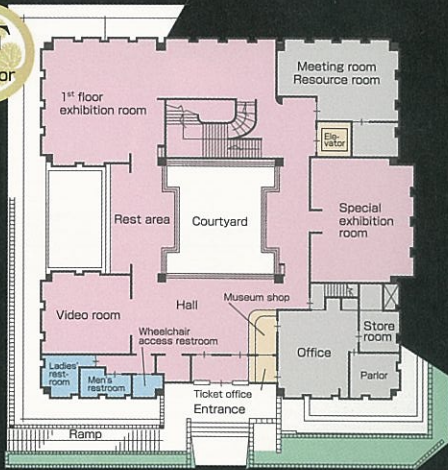


## Floor Map and Exhibition Information

1F  
1st Floor



### ◆ Special Exhibition Room

Various exhibitions related to Iyeyasu and the Mikawa Samurai featuring the many resources, art works, weapons and armor owned by the museum.

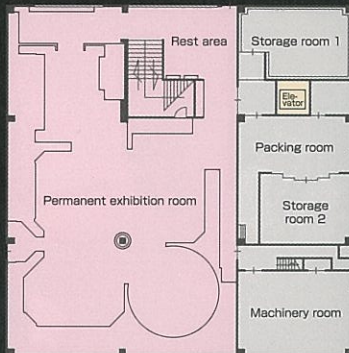
### ◆ 1st Floor Exhibition Room

Ever-changing exhibitions of items donated or entrusted to the museum including historical materials and art works.

### ◆ Video Room

Videos on Okazaki Castle and Iyeyasu including the "Find Tokugawa Iyeyasu" quiz. Full of information on Iyeyasu and the Mikawa Samurai.

BF  
Basement



### ◆ Permanent Exhibition Room

The time from the eight generations of the Matsudaira clan to when Iyeyasu ruled all of Japan is divided into five areas and introduced by Ōkubo Hikozaemon, the author of "Mikawa Monogatari" (The Story of the Mikawa Region). The large moving diorama and full color screen depicting the battle of Sekigahara is a must see.



## Visitor Information

### ◆ Admission

Admission		Adult (Junior high student and above)	Child (5 years and older)
Iyeyasu and Mikawa Bushi Museum	General admission	¥350	¥200
	Group of 30-99	¥280 each	¥160 each
	Group of 100 or more	¥230 each	¥130 each
Okazaki Castle	General admission	¥200	¥100
	Group of 30-99	¥160 each	¥80 each
	Group of 100 or more	¥130 each	¥60 each
Castle and Museum combined pass	General admission	¥500	¥270
	Group of 30-99	¥400 each	¥220 each
	Group of 100 or more	¥320 each	¥170 each

### ◆ Okazaki Kōen Parking 8:30~21:30

Car : ¥100 per 30 min.

Bus : ¥1,100 per 3 hrs.



◆ Opening hours : 9:00~17:00 (last admission 16:30)

◆ Closed during the New Year period (Dec.29 to Jan.1)

◆ Address : Okazaki Park, Kōsei-chō, Okazaki, Aichi 444-0052  
Tel : (0564) 24-2204 Fax : (0564) 24-2247

◆ Website :

<http://www.city.okazaki.aichi.jp/museum/ka161.htm>



English

THE IYEYASU AND MIKAWA BUSHI MUSEUM

三河武士のやがた  
家康館



# Permanent Exhibition



Replica of Ieyasu's gold plated armor



Folding chair used by Matsudaira Hiroitada



Saddle with abalone shell inlay used by Matsudaira Hiroitada

2

## Ieyasu's birth to hostage period

Ieyasu was born in Okazaki Castle as Takechiyo (his infant name, later to be changed to Motoyasu), the first son of Matsudaira Hiroitada (8<sup>th</sup> generation of the Matsudaira Clan). Ieyasu was held captive by the Oda and Imagawa clans for 12 years from when he was six years old. This difficult time for Ieyasu and his family is depicted in images and artifacts.

1

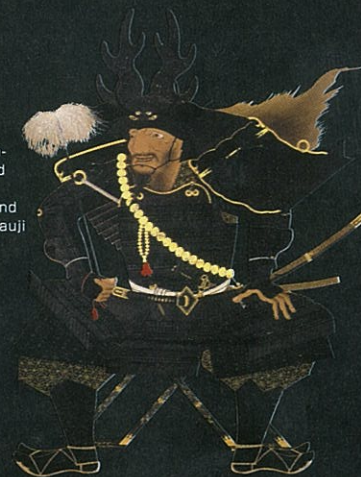
## The Emergence of the Matsudaira clan and its Vassals

Okubo Hikozaemon, the author of "Mikawa Monogatari" (The Story of the Mikawa Region), guides visitors through the history of the Matsudaira Clan from its founder, Matsudaira Chikauji, to seventh-generation descendent Kiyoye with computer graphics and fascinating artifacts.

Prologue

## The Climate of Mikawa That Produced the Ruler of All of Japan

Okazaki was deeply connected with the Genji and Ashikaga Clans throughout the Kamakura (1185 to 1333) and Muromachi (1336 to 1573) Periods. This section introduces the background of the area focusing on Ashikaga Takauji and Minamoto Yorimoto.



Replica of a picture of Honda Tadakatsu

3

## Ieyasu's conquest of Mikawa

When Imagawa Yoshimoto was killed in the battle of Okehazama, Ieyasu escaped and returned to Okazaki. In order to conquer the Mikawa Region, he cut all ties with Imagawa and become independent through the insurge which is displayed in pictures here in the museum.

## Battle of Sekigahara



## Hands-on Exhibition

This area of the museum features full scale weapons and armor just like those used by Ieyasu and the Mikawa Samurai. Feel free to try on the helmets — why not take a photo too!



3

2

1

Prologue

5

4

5

## Ieyasu's as the founder of the Edo Period

In 1600 Ieyasu fought against troops of Ishida Mitsunari at Sekigahara and won. In 1603 he was appointed Shogun and established the Edo Shogunate. Two years later he assigned the position of Shogun to his son Hidetada and resigned from the official post as the Shogunate, but continued to exercise influence as a retired Shogun. He exterminated the Toyotomi clan during two battles in Osaka, eradicating every potential enemy. This section illustrates the latter part of Ieyasu's life until he died at the age of 75 and includes his portrait.



Portrait of Tokugawa Ieyasu

4

## Ieyasu during Oda's and Toyotomi's ruling

After conquering Mikawa Ieyasu waged war against the Takeda clan. After the death of Nobunaga, Ieyasu took control of Kai and Shinano. Ieyasu became the lord of five provinces and finally engaged in a battle with Toyotomi Hideyoshi. The battle of Sekigahara comes to life in large pictures; a large moving diorama and full color screen displays.

